

36-2654: Anti-Cytokeratin 6A (KRT6A) (Basal Cell Marker) Monoclonal Antibody(Clone: rKRT6A/2100)

| | |
|--------------------------------|---|
| Clonality : | Monoclonal |
| Clone Name : | rKRT6A/2100 |
| Application : | IHC |
| Reactivity : | Human |
| Gene : | KRT6A |
| Gene ID : | 3853 |
| Uniprot ID : | P02538 |
| Alternative Name : | 58kDa Cytokeratin; CK5; Cytokeratin-5; DDD1; Epidermolysis Bullosa Simplex 2 (EBS2); Keratin 5; Keratin, Type II Cytoskeletal 5; Keratin-5; KRT5; Type-II Cytoskeletal 5; Type-II keratin Kb5 |
| Isotype : | Mouse IgG1, kappa |
| Immunogen Information : | Recombinant full-length human Cytokeratin 6A (KRT6A) protein |

Description

This MAb recognizes a protein of 56kDa, identified as cytokeratin 6A (KRT6A). In humans, multiple isoforms of Cytokeratin 6 (6A-6F), encoded by several highly homologous genes, have distinct tissue expression patterns. Cytokeratin 6A is the dominant form in epithelial tissue. Cytokeratin 6 and 16 are expressed in keratinocytes, which are undergoing rapid turnover in the suprabasal region (also known as hyper-proliferation-related keratins). Cytokeratin 6 is found in hair follicles, suprabasal cells of a variety of internal stratified epithelia, in epidermis, in both normal and hyper-proliferative situations. Epidermal injury results in activation of keratinocytes, which express KRT6 and KRT16. KRT6 is strongly expressed in about 75% of head and neck squamous cell carcinomas.

Product Info

| | |
|----------------------------|---|
| Amount : | 20 µg / 100 µg |
| Content : | 200 µg/ml of Ab Purified from Bioreactor Concentrate by Protein A/G. Prepared in 10mM PBS with 0.05% BSA & 0.05% azide. Also available WITHOUT BSA & azide at 1.0mg/ml. |
| Storage condition : | Antibody with azide - store at 2 to 8°C. Antibody without azide - store at -20 to -80°C. Antibody is stable for 24 months. Non-hazardous. |

Application Note

Immunohistochemistry (Formalin-fixed) (1-2ug/ml for 30 minutes at RT),(Staining of formalin-fixed tissues requires heating tissue sections in 10mM Tris with 1mM EDTA, pH 9.0, for 45 min at 95°C followed by cooling at RT for 20 minutes);

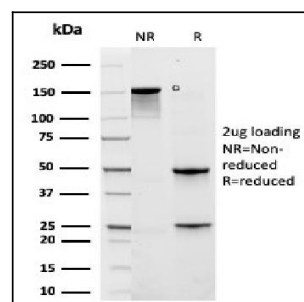


Fig. 1: SDS-PAGE Analysis Purified KRT6A Recombinant Mouse Monoclonal Antibody (rKRT6A/2100). Confirmation of Purity and Integrity of Antibody.

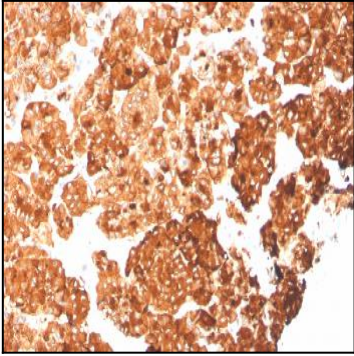


Fig. 2: Formalin-fixed, paraffin-embedded human pancreas stained with KRT6A Recombinant Mouse Monoclonal Antibody (rKRT6A/2100).