

36-2656: Anti-Cytokeratin 7 (Glandular and Transitional Epithelial Marker) Monoclonal Antibody(Clone: KRT7/2200)

Clonality :	Monoclonal
Clone Name :	KRT7/2200
Application :	WB,IHC
Reactivity :	Human
Gene :	KRT7
Gene ID :	3855
Uniprot ID :	P08729
Alternative Name :	CK-7, K2C7, Keratin 55K Type II Cytoskeletal, Keratin Simple Epithelial Type 1 K7, Keratin Type II Cytoskeletal 7, Krt2-7, KRT7, Sarcolectin, SCL, Type II Mesothelial Keratin K7, Type-II Keratin Kb7
Isotype :	Mouse IgG1, kappa
Immunogen Information :	Recombinant full-length human KRT7 protein

Description

It recognizes an intermediate filament protein (IFP) of 55kDa, which is identified as cytokeratin 7. This MAb is highly specific to cytokeratin 7 and shows no cross-reaction with other IFPs. Cytokeratin 7 is a basic cytokeratin, which is found in most glandular and transitional epithelia but not in the stratified squamous epithelia. Keratin 7 is expressed in the epithelial cells of ovary, lung, and breast but not of colon, prostate, or gastrointestinal tract. MAb to cytokeratin 7 is highly useful in distinguishing ovarian carcinomas (keratin 7+) from colon carcinomas (keratin 7-).

Product Info

Amount :	20 µg / 100 µg
Content :	200 µg/ml of Ab Purified from Bioreactor Concentrate by Protein A/G. Prepared in 10mM PBS with 0.05% BSA & 0.05% azide. Also available WITHOUT BSA & azide at 1.0mg/ml.
Storage condition :	Antibody with azide - store at 2 to 8°C. Antibody without azide - store at -20 to -80°C. Antibody is stable for 24 months. Non-hazardous.

Application Note

Western Blot (1-2ug/ml); Immunohistochemistry (Formalin-fixed) (1-2ug/ml for 30 minutes at RT),(Staining of formalin-fixed tissues requires heating tissue sections in 10mM Tris with 1mM EDTA, pH 9.0, for 45 min at 95°C followed by cooling at RT for 20 minutes);

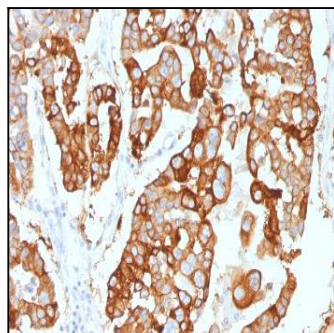


Fig. 1: Formalin-fixed, paraffin-embedded human Ovarian Carcinoma stained with Cytokeratin-7 Mouse Monoclonal Antibody (KRT7/2200).

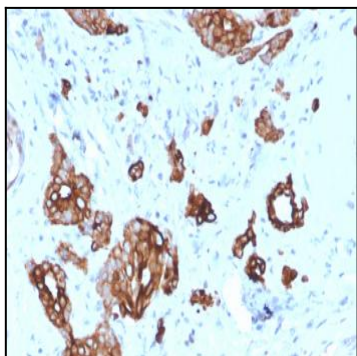


Fig. 2: Formalin-fixed, paraffin-embedded human Breast Carcinoma stained with Cytokeratin-7 Mouse Monoclonal Antibody (KRT7/2200).

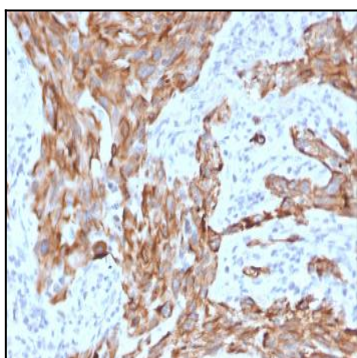


Fig. 3: Formalin-fixed, paraffin-embedded human Lung Carcinoma stained with Cytokeratin-7 Mouse Monoclonal Antibody (KRT7/2200).

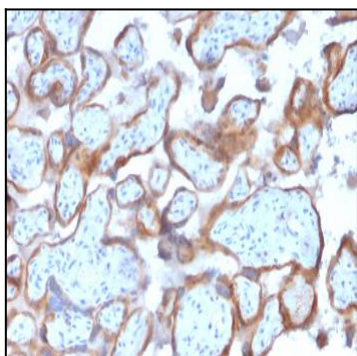


Fig. 4: Formalin-fixed, paraffin-embedded human Placenta stained with Cytokeratin-7 Mouse Monoclonal Antibody (KRT7/2200).

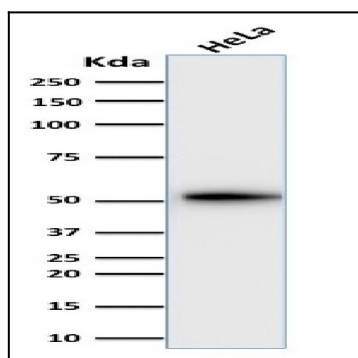


Fig. 5: Western Blot Analysis of human HeLa cell lysate using Cytokeratin-7 Mouse Monoclonal Antibody (KRT7/2200).

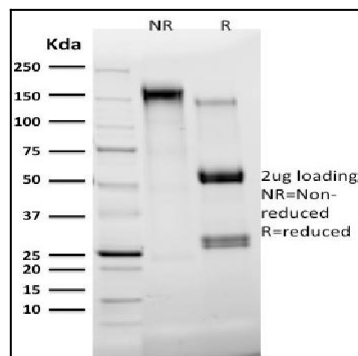


Fig. 6: SDS-PAGE Analysis Purified Cytokeratin-7 Mouse Monoclonal Antibody (KRT7/2200). Confirmation of Integrity and Purity of Antibody.