

## 36-2657: Anti-Cytokeratin 7 (Glandular and Transitional Epithelial Marker) Monoclonal Antibody(Clone: KRT7/1499R)

<b>Clonality :</b>	Monoclonal
<b>Clone Name :</b>	KRT7/1499R
<b>Application :</b>	FACS,WB,IHC
<b>Reactivity :</b>	Human
<b>Gene :</b>	KRT7
<b>Gene ID :</b>	3855
<b>Uniprot ID :</b>	P08729
<b>Alternative Name :</b>	CK-7, K2C7, Keratin 55K Type II Cytoskeletal, Keratin Simple Epithelial Type 1 K7, Keratin Type II Cytoskeletal 7, Krt2-7, KRT7, Sarcolectin, SCL, Type II Mesothelial Keratin K7, Type-II Keratin Kb7
<b>Isotype :</b>	Rabbit IgG
<b>Immunogen Information :</b>	Recombinant full-length human KRT7 protein

### Description

It recognizes an intermediate filament protein (IFP) of 55kDa, which is identified as cytokeratin 7. This MAb is highly specific to cytokeratin 7 and shows no cross-reaction with other IFPs. Cytokeratin 7 is a basic cytokeratin, which is found in most glandular and transitional epithelia but not in the stratified squamous epithelia. Keratin 7 is expressed in the epithelial cells of ovary, lung, and breast but not of colon, prostate, or gastrointestinal tract. This MAb is highly useful in distinguishing ovarian carcinomas (keratin 7+) from colon carcinomas (keratin 7-).

### Product Info

<b>Amount :</b>	20 µg / 100 µg
<b>Content :</b>	200 µg/ml of Ab Purified by Protein A Column. Prepared in 10mM PBS with 0.05% BSA & 0.05% azide. Also available WITHOUT BSA & azide at 1.0mg/ml.
<b>Storage condition :</b>	Antibody with azide - store at 2 to 8°C. Antibody without azide - store at -20 to -80°C. Antibody is stable for 24 months. Non-hazardous.

### Application Note

Flow Cytometry (1-2ug/million cells); Western Blot (1-2ug/ml);Immunohistochemistry (Formalin-fixed) (1-2ug/ml for 30 minutes at RT)(Staining of formalin-fixed tissues is enhanced by heating tissue sections in 10mM Tris with 1mM EDTA, pH 9.0 for 45 min at 95&degC followed by cooling at RT for 20 minutes)

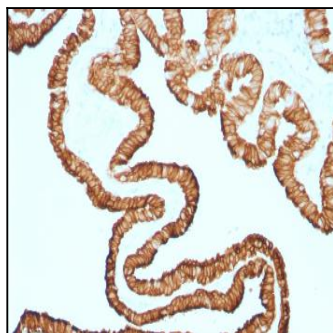


Fig. 1: Formalin-fixed, paraffin-embedded human Oviduct stained with Cytokeratin 7 Rabbit Monoclonal Antibody (KRT7/1499R).

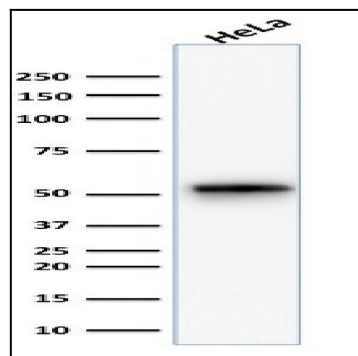


Fig. 2: Western Blot Analysis of human HeLa cell lysate using Cytokeratin 7 Rabbit Monoclonal Antibody (KRT7/1499R).

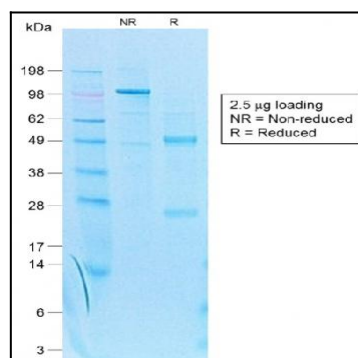


Fig. 3: SDS-PAGE Analysis Purified Cytokeratin 7 Rabbit Recombinant Monoclonal Antibody (KRT7/1499R).

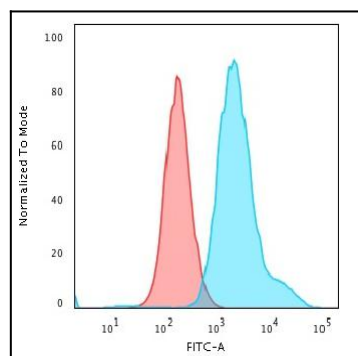


Fig. 4: Flow Cytometric Analysis of PFA-fixed HeLa cells using Cytokeratin 7 Rabbit Recombinant MAb (KRT7/1499R) followed by Goat anti-rabbit IgG-CF488 (Blue); Isotype Control (Red)