

36-2691: Anti-Cytokeratin 18 (KRT18) Monoclonal Antibody(Clone: KRT18/2819R)

Clonality :	Monoclonal
Clone Name :	KRT18/2819R
Application :	FACS,WB,IFIHC
Reactivity :	Human, Mouse, Rat
Gene :	KRT18
Gene ID :	3875
Uniprot ID :	P05783
Alternative Name :	Cell Proliferation-inducing Gene 46 Protein; CK18; CYK18Cytokeratin Endo B; K18; Keratin-18; Kerd; KRT18
Isotype :	Rabbit IgG
Immunogen Information :	Recombinant human full-length KRT18 protein

Description

This MAb reacts with a wide variety of simple epithelia. It does not react with stratified squamous epithelia. It reacts with epithelial tumors of the gastrointestinal tract, lung, breast, pancreas, ovary, and thyroid. Cytokeratin 18, which belongs to the type A (acidic) subfamily of low molecular weight keratins, exists in combination with cytokeratin 8. It was reported that tissues from gastrointestinal tract are positive for both cytokeratin 8 and 18 but do not contain cytokeratin 14. Tissues from gastrointestinal tract, respiratory tract and urogenital tract, as well as endocrine and exocrine tissues and mesothelial cells are positive for cytokeratin 18.

Product Info

Amount :	20 µg / 100 µg
Content :	200 µg/ml of Ab Purified from Bioreactor Concentrate by Protein A/G. Prepared in 10mM PBS with 0.05% BSA & 0.05% azide. Also available WITHOUT BSA & azide at 1.0mg/ml.
Storage condition :	Antibody with azide - store at 2 to 8°C. Antibody without azide - store at -20 to -80°C. Antibody is stable for 24 months. Non-hazardous.

Application Note

Flow Cytometry (1-2ug/million cells);Western Blot (1-2ug/ml);Immunofluorescence (1-2ug/ml); Immunohistochemistry (Formalin-fixed) (1-2ug/ml for 30 min at RT)(Staining of formalin-fixed tissues requires heating tissue sections in 10mM Tris with 1mM EDTA, pH 9.0, for 45 min at 95°C followed by cooling at RT for 20 minutes);

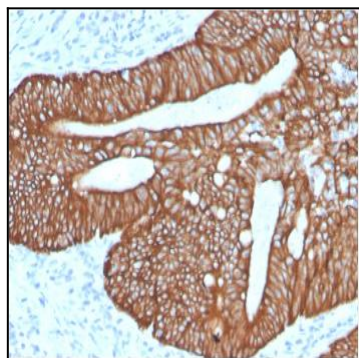


Fig. 1: Formalin-fixed, paraffin-embedded human Colon Carcinoma stained with Cytokeratin 18Rabbit Recombinant Monoclonal Antibody (KRT18/2819R).

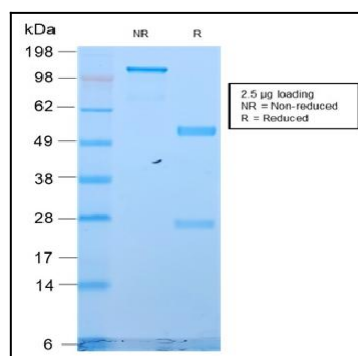


Fig. 2: SDS-PAGE Analysis of Purified Cytokeratin 18 Rabbit Recombinant Monoclonal Antibody (KRT18/2819R). Confirmation of Purity and Integrity of Antibody.

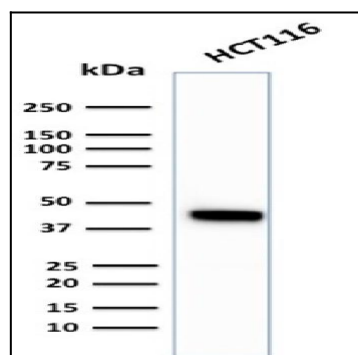


Fig. 3: Western Blot Analysis of HCT116 cell lysate using Cytokeratin 18 Rabbit Recombinant Monoclonal Antibody (KRT18/2819R).

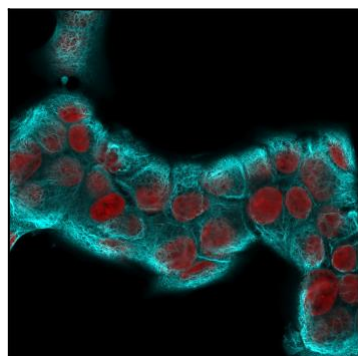


Fig. 4: Immunofluorescence Analysis of MCF-7 cells labeling KRT18 with Cytokeratin 18 Rabbit Recombinant MAb (KRT18/2819R) followed by Goat anti-Rabbit IgG-CF488 (Cyan). The nuclear counterstain is Reddot (Red)

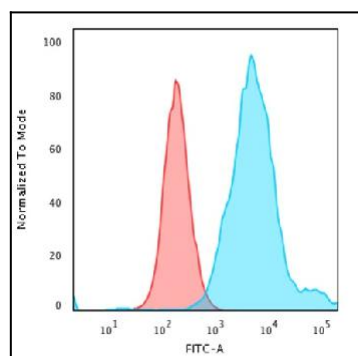


Fig. 5: Flow Cytometric Analysis of PFA-fixed HeLa cells using Cytokeratin 18 Rabbit Recombinant MAb (KRT18/2819R) followed by Goat anti-rabbit IgG-CF488 (Blue); Isotype Control (Red).