

36-2722: Anti-Ep-CAM / CD326 (Extracellular Domain) (Epithelial Marker) Monoclonal Antibody(Clone: rMOC-31)

| | |
|--------------------------------|------------------------------------------------------------------------------------------------------------------------------------------------------------------------------------------------------------------------------------------------------------------------------------------------------------------------------------------------------------------------------------------------|
| Clonality : | Monoclonal |
| Clone Name : | rMOC-31 |
| Application : | FACS,IF,WB,IHC |
| Reactivity : | Human |
| Gene : | TACSTD1 |
| Gene ID : | 4072 |
| Uniprot ID : | P16422 |
| Alternative Name : | Adenocarcinoma-associated Antigen; Cell Surface Glycoprotein Trop-1; EGP2; EGP314; EGP40; Epithelial Cell Adhesion Molecule; Epithelial Glycoprotein 314; ESA; KSA; TACD1; TROP1; Tumor-associated Calcium Signal Transducer 1 (TACSTD1); ECS-1; Epidermal Surface Antigen 1; ESA1; FLOT2; Flotillin-2; Membrane Component, Chromosome 17, Surface Marker-1 (M17S1); REG-1; Reggie-1; Reggie-2 |
| Isotype : | Mouse IgG1, kappa |
| Immunogen Information : | Recombinant full-length human EpCAM protein |

Description

Binding epitope of this antibody is located in the first EGF-like repeat domain (EGF1) between amino acids 27-59 of EpCAM. EGP40 is a 40-43kDa transmembrane epithelial glycoprotein, also identified as epithelial specific antigen (ESA), or epithelial cellular adhesion molecule (EpCAM). It is expressed on baso-lateral cell surface in most simple epithelia and a vast majority of carcinomas with the exception of adult squamous epithelium, hepatocytes and gastric epithelial cells. This antibody has been used to distinguish adenocarcinoma from pleural mesothelioma and hepatocellular carcinoma. This antibody is also useful in distinguishing serous carcinomas of the ovary from mesothelioma.

Product Info

| | |
|----------------------------|----------------------------------------------------------------------------------------------------------------------------------------------------------|
| Amount : | 20 µg / 100 µg |
| Content : | 200 µg/ml of recombinant MAb Purified by Protein A/G. Prepared in 10mM PBS with 0.05% BSA & 0.05% azide. Also available WITHOUT BSA & azide at 1.0mg/ml. |
| Storage condition : | Antibody with azide - store at 2 to 8°C. Antibody without azide - store at -20 to -80°C. Antibody is stable for 24 months. Non-hazardous. |

Application Note

Flow Cytometry (1-2ug/million cells); Immunofluorescence (1-2ug/ml); Western Blot (1-2ug/ml); ,Immunohistochemistry (Formalin-fixed) (1-2ug/ml for 30 minutes at RT),(Staining of formalin-fixed tissues requires heating tissue sections in 10mM Tris with 1mM EDTA, pH 9.0, for 45 min at 95 °C followed by cooling at RT for 20 minutes),

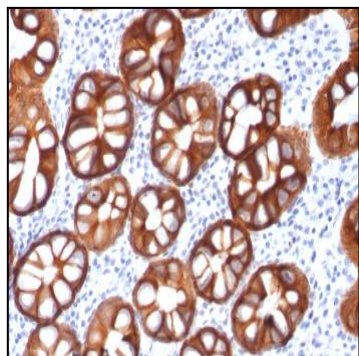


Fig. 1: Formalin-fixed, paraffin-embedded human Colon Carcinoma stained with EpCAM Mouse Recombinant Monoclonal Antibody (rMOC-31).

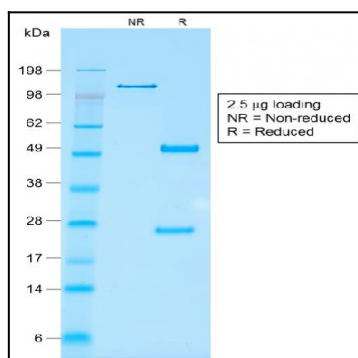


Fig. 2: SDS-PAGE Analysis Purified EpCAM Mouse Recombinant Monoclonal Antibody (rMOC-31). Confirmation of Purity and Integrity of Antibody.

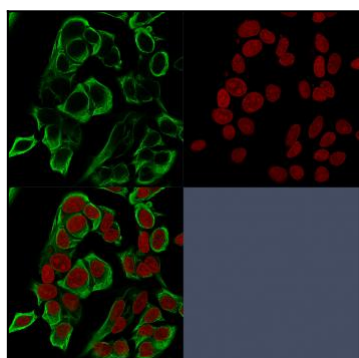


Fig. 3: Confocal immunofluorescence analysis of MCF-7 cells using EpCAM Mouse Recombinant Monoclonal Antibody (rMOC-31) labeled in Green. Reddot is used to label the nucleus red.