

## 36-2734: Anti-Ep-CAM / CD326 (Extracellular Domain) (Epithelial Marker) Monoclonal Antibody(Clone: EGP40/2041R)

<b>Clonality :</b>	Monoclonal
<b>Clone Name :</b>	EGP40/2041R
<b>Application :</b>	IHC
<b>Reactivity :</b>	Human
<b>Gene :</b>	TACSTD1
<b>Gene ID :</b>	4072
<b>Uniprot ID :</b>	P16422
<b>Alternative Name :</b>	Adenocarcinoma-associated Antigen; Cell Surface Glycoprotein Trop-1; EGP2; EGP314; EGP40; Epithelial Cell Adhesion Molecule; Epithelial Glycoprotein 314; ESA; KSA; TACD1; TROP1; Tumor-associated Calcium Signal Transducer 1 (TACSTD1)
<b>Isotype :</b>	Rabbit IgG
<b>Immunogen Information :</b>	Recombinant human EpCAM fragment from extracellular domain (around aa100-224) (exact sequence is proprietary)

### Description

Epitope of this MAb is mapped between aa 202-212 of EGP40, which is a 40-43kDa transmembrane epithelial glycoprotein, also identified as epithelial specific antigen (ESA), or epithelial cellular adhesion molecule (Ep-CAM). It is expressed on baso-lateral cell surface in most simple epithelia and a vast majority of carcinomas. Antibody to Ep-CAM has been used to distinguish adenocarcinoma from pleural mesothelioma and hepatocellular carcinoma. This antibody is also useful in distinguishing serous carcinomas of the ovary from mesothelioma.

### Product Info

<b>Amount :</b>	20 µg / 100 µg
<b>Content :</b>	200 µg/ml of Ab Purified by Protein A. Prepared in 10mM PBS with 0.05% BSA & 0.05% azide. Also available WITHOUT BSA & azide at 1.0mg/ml.
<b>Storage condition :</b>	Antibody with azide - store at 2 to 8°C. Antibody without azide - store at -20 to -80°C. Antibody is stable for 24 months. Non-hazardous.

### Application Note

Immunohistochemistry (Formalin-fixed) (1-2ug/ml for 30 minutes at RT),(Staining of formalin-fixed tissues requires heating tissue sections in 10mM Tris with 1mM EDTA, pH 9.0, for 45 min at 95 &degC followed by cooling at RT for 20 minutes),

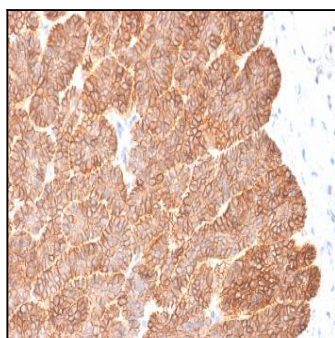


Fig. 1: Formalin-fixed, paraffin-embedded human Basal Cell Carcinoma stained with EpCAM Rabbit Recombinant Monoclonal Antibody (EGP40/2041R).

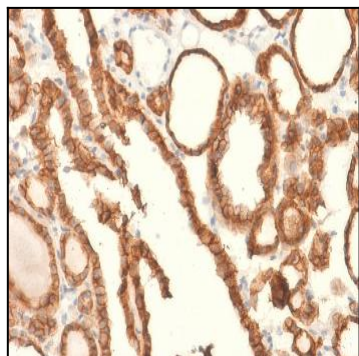


Fig. 2: Formalin-fixed, paraffin-embedded human Thyroid Carcinoma stained with EpCAM Rabbit Recombinant Monoclonal Antibody (EGP40/2041R).

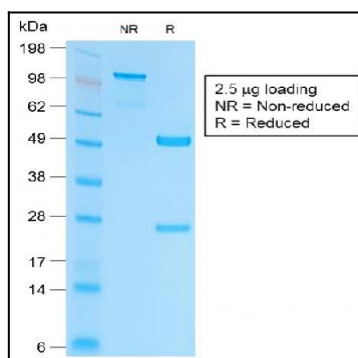


Fig. 3: SDS-PAGE Analysis Purified EpCAM Rabbit Recombinant Monoclonal Antibody (EGP40/2041R).

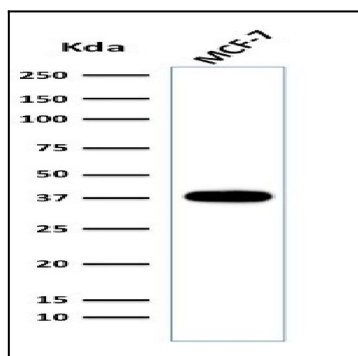


Fig. 4: Western Blot of MCF-7 cell lysate using EpCAM Rabbit Recombinant Monoclonal Antibody (EGP40/2041R).

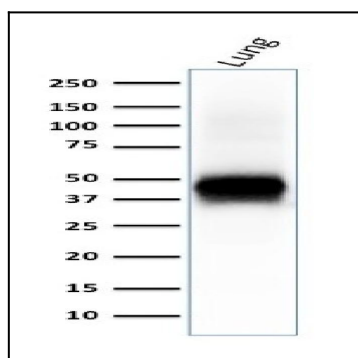


Fig. 5: Western Blot of human lung lysate using EpCAM Rabbit Recombinant Monoclonal Antibody (EGP40/2041R).