

36-2749: Anti-MCM7 (Proliferation Marker) Monoclonal Antibody(Clone: MCM7/1466)

Clonality :	Monoclonal
Clone Name :	MCM7/1466
Application :	WB,IHC
Reactivity :	Human
Gene :	MCM7
Gene ID :	4176
Uniprot ID :	P33993
Alternative Name :	CDC47; DNA replication licensing factor MCM7; MCM7 mini chromosome maintenance deficient 7; Mini chromosome Maintenance 7; Mini chromosome maintenance protein 7; P1.1-MCM3; P1CDC47; P85MCM; PNAS146
Isotype :	Mouse IgG2b, kappa
Immunogen Information :	Recombinant human MCM7 protein fragment (aa195-319)

Description

MCM7 is one of the highly conserved mini-chromosome maintenance proteins (MCM) that is essential for the initiation of eukaryotic genome replication. The hexameric protein complex formed by the MCM proteins is a key component of the pre-replication complex and may be involved in the formation of replication forks and in the recruitment of other DNA replication related proteins. The MCM complex consisting of this protein and MCM2, 4 and 6 proteins possesses DNA helicase activity, and may act as a DNA unwinding enzyme. Cyclin D1-dependent kinase, CDK4, is found to associate with this protein, and may regulate the binding of this protein with the tumor suppressor protein RB1/RB.

Product Info

Amount :	20 µg / 100 µg
Content :	200 µg/ml of Ab Purified from Bioreactor Concentrate by Protein A/G. Prepared in 10mM PBS with 0.05% BSA & 0.05% azide. Also available WITHOUT BSA & azide at 1.0mg/ml.
Storage condition :	Antibody with azide - store at 2 to 8°C. Antibody without azide - store at -20 to -80°C. Antibody is stable for 24 months. Non-hazardous.

Application Note

Western Blot (1-2ug/ml); Immunohistochemistry (Formalin-fixed) (1-2ug/ml for 30 minutes at RT)(Staining of formalin-fixed tissues requires heating tissue sections in 10mM Tris with 1mM EDTA, pH 9.0, for 45 min at 95°C followed by cooling at RT for 20 minutes);

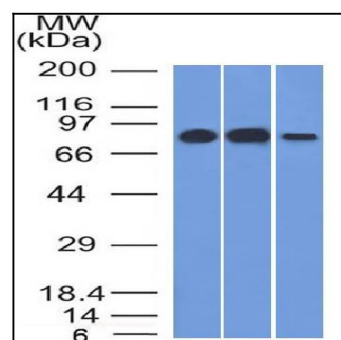


Fig. 1: Western Blot Analysis A) HeLa (B) Raji and C) HepG2 cell lysate Using MCM7 Mouse Monoclonal Antibody (MCM7/1466).

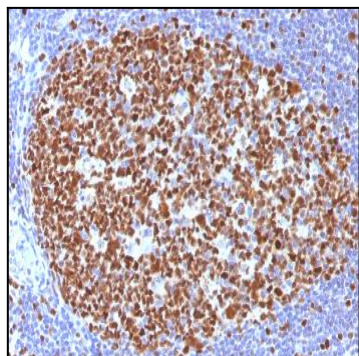


Fig. 2: Formalin-fixed, paraffin-embedded human Tonsil stained with MCM7 Mouse Monoclonal Antibody (MCM7/1466).

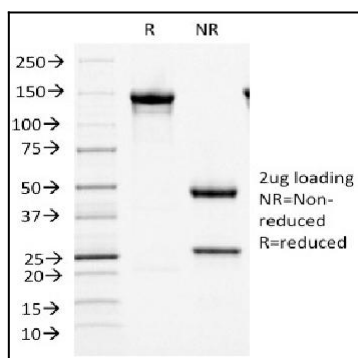


Fig. 3: SDS-PAGE Analysis Purified MCM7 Mouse Monoclonal Antibody (MCM7/1466). Confirmation of Integrity and Purity of Antibody.

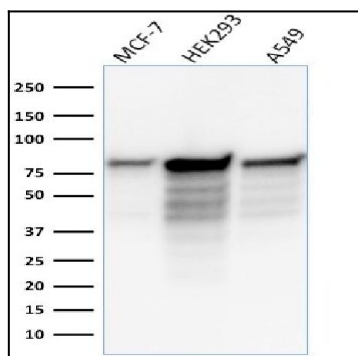


Fig. 4: Western Blot Analysis of MCF-7, HEK-293, A549 lysate using MCM7 Mouse Monoclonal Antibody (MCM7/1466).