

### 36-2759: Anti-Malate dehydrogenase 1 NAD (soluble) Monoclonal Antibody(Clone: CPTC-MDH1-1)

<b>Clonality :</b>	Monoclonal
<b>Clone Name :</b>	CPTC-MDH1-1
<b>Application :</b>	WB
<b>Reactivity :</b>	Human
<b>Gene :</b>	MDH1
<b>Gene ID :</b>	4190
<b>Uniprot ID :</b>	P40925
<b>Alternative Name :</b>	Cytosolic malate dehydrogenase, Diiodophenylpyruvate reductase, HEL-S-32, MDH-s, MDHA; MDH1; soluble malate dehydrogenase
<b>Isotype :</b>	Mouse IgG2a, kappa
<b>Immunogen Information :</b>	Recombinant human full-length MDH1 protein

#### Description

Malate dehydrogenase catalyzes the reversible oxidation of malate to oxaloacetate, utilizing the NAD/NADH cofactor system in the citric acid cycle. The protein encoded by this gene is localized to the cytoplasm and may play pivotal roles in the malate-aspartate shuttle that operates in the metabolic coordination between cytosol and mitochondria. Alternatively spliced transcript variants encoding distinct isoforms have been found for this gene.

#### Product Info

<b>Amount :</b>	20 µg / 100 µg
<b>Content :</b>	200 µg/ml of Ab Purified from Bioreactor Concentrate by Protein A/G. Prepared in 10mM PBS with 0.05% BSA & 0.05% azide. Also available WITHOUT BSA & azide at 1.0mg/ml.
<b>Storage condition :</b>	Antibody with azide - store at 2 to 8°C. Antibody without azide - store at -20 to -80°C. Antibody is stable for 24 months. Non-hazardous.

#### Application Note

Western Blot (1-2ug/ml).

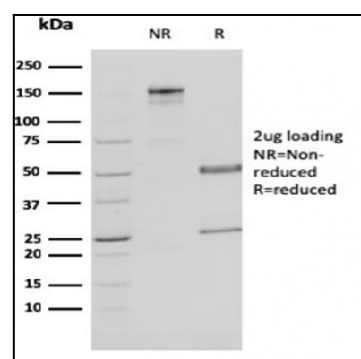


Fig. 1: SDS-PAGE Analysis Purified MDH1 Mouse Monoclonal Antibody (CPTC-MDH1-1). Confirmation of Purity and Integrity of Antibody.

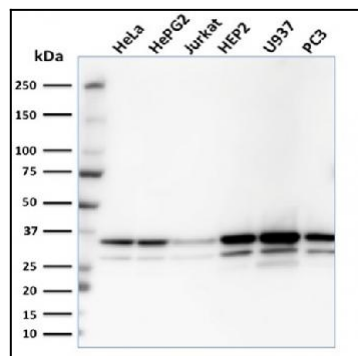


Fig. 2: Western Blot Analysis of HeLa, HepG2, Jurkat, HEP2, U937, PC3 cell lysates using MDH1 Mouse Monoclonal Antibody (CPTC-MDH1-1).