

36-2772: Anti-Ki-67 (Proliferating Cell Marker) Monoclonal Antibody(Clone: MKI67/2462)

Clonality :	Monoclonal
Clone Name :	MKI67/2462
Application :	FACS,IF,WB,IHC
Reactivity :	Human
Gene :	MKI67
Gene ID :	4288
Uniprot ID :	P46013
Alternative Name :	KI-67; Ki67; KI-67 Antigen (KIA); MKI67; Proliferation related Ki-67 antigen
Isotype :	Mouse IgG2b, kappa
Immunogen Information :	Recombinant human Ki67 protein fragment (around aa 2293-2478) (exact sequence is proprietary)

Description

Ki-67 antigen is a nuclear, non-histone protein that is present in all stages of the cell cycle except G0. This characteristic makes Ki-67 an excellent marker for proliferating cells and is commonly used as one of the prognostic factors in cancer studies. A correlation has been demonstrated between Ki-67 index and the histo-pathological grade of neoplasms. Assessment of Ki-67 expression in renal and ureter tumors shows a correlation between tumor proliferation and disease progression, thus making it possible to differentiate high-risk patients. Ki-67 expression may also prove to be important for distinguishing between malignant and benign peripheral nerve sheath tumors. Ki-67 labeling index has been shown to be a prognostic marker in a number of neoplasms including grade II astrocytoma, oligodendroglioma, colon carcinoma, and breast carcinoma. In general, Ki-67 is a good marker of proliferating cell populations.

Product Info

Amount :	20 µg / 100 µg
Content :	200 µg/ml of Ab Purified from Bioreactor Concentrate by Protein A/G. Prepared in 10mM PBS with 0.05% BSA & 0.05% azide. Also available WITHOUT BSA & azide at 1.0mg/ml.
Storage condition :	Antibody with azide - store at 2 to 8°C. Antibody without azide - store at -20 to -80°C. Antibody is stable for 24 months. Non-hazardous.

Application Note

Flow Cytometry (1-2ug/million cells); Immunofluorescence (1-2ug/ml); Western Blot (1-2ug/ml); ,Immunohistochemistry (Formalin-fixed) (1-2ug/ml for 30 minutes at RT),(Staining of formalin-fixed tissues requires heating tissue sections in 10mM Tris with 1mM EDTA, pH 9.0, for 45 min at 95 °C followed by cooling at RT for 20 minutes),

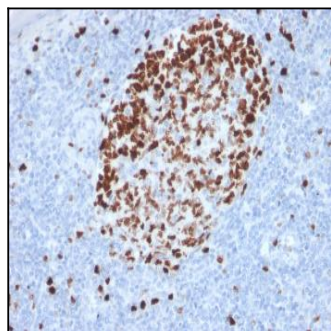


Fig. 1: Formalin-fixed, paraffin-embedded human Tonsil stained with Ki67-Monospecific Mouse Monoclonal Antibody (MKI67/2462).

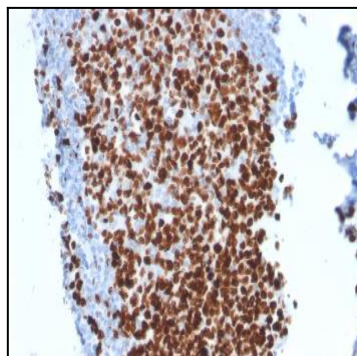


Fig. 2: Formalin-fixed, paraffin-embedded human Tonsil stained with Ki67-Monospecific Mouse Monoclonal Antibody (MKI67/2462).

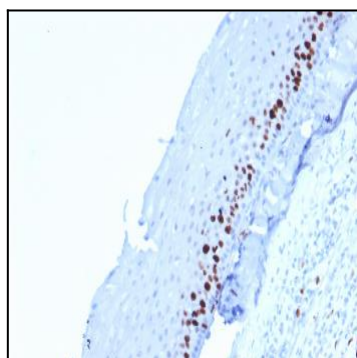


Fig. 3: Formalin-fixed, paraffin-embedded human Tonsil-Skin stained with Ki67-Monospecific Mouse Monoclonal Antibody (MKI67/2462).

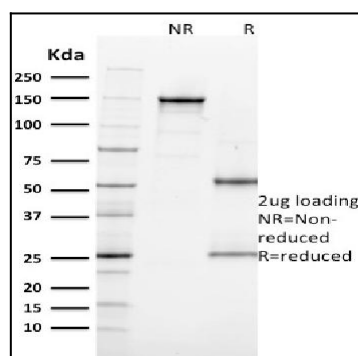


Fig. 4: SDS-PAGE Analysis Purified Ki67-Monospecific Mouse Monoclonal Antibody (MKI67/2462). Confirmation of Purity and Integrity of Antibody.

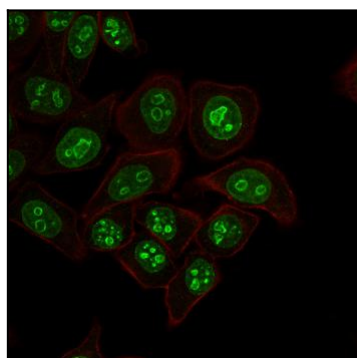


Fig. 5: Immunofluorescent staining of HeLa cells. Ki67-Monospecific Mouse Monoclonal Antibody (MKI67/2462) followed by goat anti-Mouse IgG-CF488 (green). Cell membrane is labeled with Phalloidin (red).

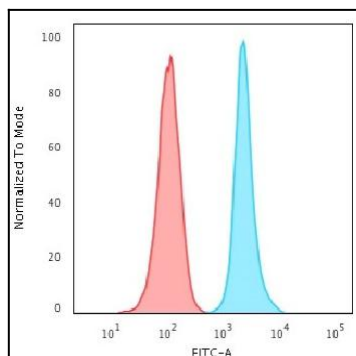


Fig. 6: Flow Cytometric Analysis of HeLa cells. Ki67-Monospecific Mouse Monoclonal Antibody (MKI67/2462) followed by goat anti-Mouse IgG-CF488 (blue); Isotype Control (red).

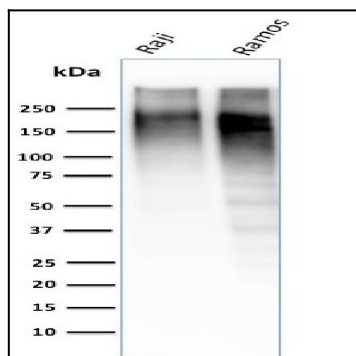


Fig. 7: Western Blot Analysis of Raji and Ramos cell lysate using Ki67-Monospecific Mouse Monoclonal Antibody (MKI67/2462).