

36-2783: Anti-CD10 (Membrane Metalloendopeptidase) Monoclonal Antibody(Clone: MME/2580)

Clonality :	Monoclonal
Clone Name :	MME/2580
Application :	ELISA,IHC
Reactivity :	Human
Gene :	MME
Gene ID :	4311
Uniprot ID :	P08473
Alternative Name :	Atriopeptidase; Common acute lymphocytic leukemia antigen (CALLA); Enkephalinase (EPN); gp100; Membrane metalloendopeptidase (MME); Neprilysin; Neutral endopeptidase (NEP); Skin fibroblast elastase (SFE)
Isotype :	Mouse IgG1, kappa
Immunogen Information :	Recombinant human CD10 protein fragment (aa 583-740) (exact sequence is proprietary)

Description

Recognizes a 100kDa glycoprotein, identified as CD10, also known as Common Acute Lymphocytic Leukemia Antigen (CALLA). It is a cell surface enzyme with neutral metalloendopeptidase activity, which inactivates a variety of biologically active peptides. CD10 is expressed on the cells of lymphoblastic, Burkitt's, and follicular germinal center lymphomas, and on cells from patients with chronic myelocytic leukemia (CML). It is also expressed on the surface of normal early lymphoid progenitor cells, immature B cells within adult bone marrow and germinal center B cells within lymphoid tissue. CD10 is also present on breast myoepithelial cells, bile canaliculi, fibroblasts, with especially high expression on the brush border of kidney and gut epithelial cells.

Product Info

Amount :	20 µg / 100 µg
Content :	200 µg/ml of Ab Purified from Bioreactor Concentrate by Protein A/G. Prepared in 10mM PBS with 0.05% BSA & 0.05% azide. Also available WITHOUT BSA & azide at 1.0mg/ml.
Storage condition :	Antibody with azide - store at 2 to 8°C. Antibody without azide - store at -20 to -80°C. Antibody is stable for 24 months. Non-hazardous.

Application Note

ELISA (Use Ab at 2-4ug/ml for coating) (Order Ab without BSA); Immunohistochemistry (Formalin-fixed) (1-2ug/ml for 30 minutes at RT)(Staining of formalin-fixed tissues requires heating tissue sections in 10mM Tris with 1mM EDTA, pH 9.0, for 45 min at 95°C followed by cooling at RT for 20 minutes)

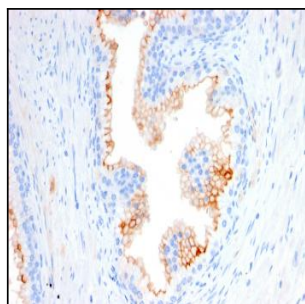


Fig. 1: Formalin-fixed, paraffin-embedded human Prostate Carcinoma stained with CD10 Mouse Monoclonal Antibody (MME/2580).

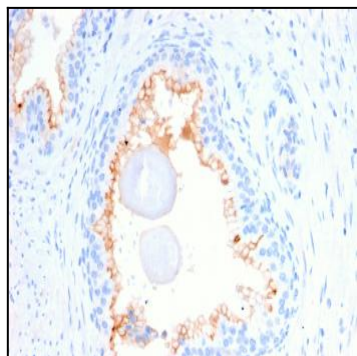


Fig. 2: Formalin-fixed, paraffin-embedded human Prostate Carcinoma stained with CD10 Mouse Monoclonal Antibody (MME/2580).

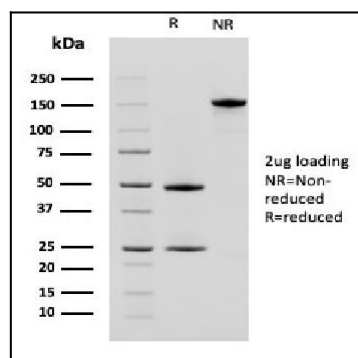


Fig. 3: SDS-PAGE Analysis Purified CD10 Mouse Monoclonal Antibody (MME/2580). Confirmation of Purity and Integrity of Antibody.