

36-2786: Anti-CD10 (Membrane Metalloendopeptidase) Monoclonal Antibody(Clone: 56C6) (discontinued)

Clonality :	Monoclonal
Clone Name :	56C6
Application :	IHC
Reactivity :	Human
Gene :	MME
Gene ID :	4311
Uniprot ID :	P08473
Alternative Name :	Atriopeptidase; Common acute lymphocytic leukemia antigen (CALLA); Enkephalinase (EPN); gp100; Membrane metalloendopeptidase (MME); Neprilysin; Neutral endopeptidase (NEP); Skin fibroblast elastase (SFE)
Isotype :	Mouse IgG1, kappa
Immunogen Information :	Recombinant human CD10 protein fragment

Description

Recognizes a 100kDa glycoprotein, identified as CD10, also known as Common Acute Lymphocytic Leukemia Antigen (CALLA). It is a cell surface enzyme with neutral metalloendopeptidase activity, which inactivates a variety of biologically active peptides. CD10 is expressed on the cells of lymphoblastic, Burkitt's, and follicular germinal center lymphomas, and on cells from patients with chronic myelocytic leukemia (CML). It is also expressed on the surface of normal early lymphoid progenitor cells, immature B cells within adult bone marrow and germinal center B cells within lymphoid tissue. CD10 is also present on breast myoepithelial cells, bile canaliculi, fibroblasts, with especially high expression on the brush border of kidney and gut epithelial cells.

Product Info

Amount :	0.1 ml / 0.5 ml
Content :	Tissue culture supernatant with 0.05% Azide. Contact us if you require it in a different format.
Storage condition :	Store at 2 to 8°C. Antibody is stable for 24 months. Non-hazardous.

Application Note

Immunohistochemistry (Formalin-fixed) (1:50-1:100 for 30 minutes at RT) (Staining of formalin-fixed tissues requires heating tissue sections in 1mM EDTA, pH 9.0, for 45 min at 95°C followed by cooling at RT for 20 minutes)

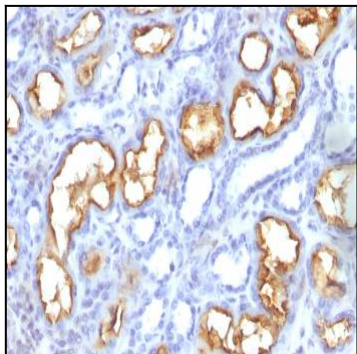


Fig. 1: Formalin-fixed, paraffin-embedded human Kidney stained with CD10 Mouse Monoclonal Antibody (56C6).