

## 36-2799: Anti-MRP1 / ABCC1 (Multidrug Resistance Related Protein 1) Monoclonal Antibody(Clone: MRP1/1343)

<b>Clonality :</b>	Monoclonal
<b>Clone Name :</b>	MRP1/1343
<b>Application :</b>	ELISA,FACS,WB
<b>Reactivity :</b>	Human
<b>Gene :</b>	ABCC1
<b>Gene ID :</b>	4363
<b>Uniprot ID :</b>	P33527
<b>Alternative Name :</b>	ABC29; ABCC1; ATP binding cassette sub family C (CFTR/MRP) member 1; ATP-binding cassette sub-family C member 1; GSX; Leukotriene C(4) transporter; LTC4 transporter; Multidrug resistance-associated protein 1 (MRP1)
<b>Isotype :</b>	Mouse IgG1, kappa
<b>Immunogen Information :</b>	Recombinant full-length human ABCC1 protein

### Description

The two members of the large family of ABC transporters known to confer multidrug resistance in human cancer cells are the MDR1 P-glycoprotein and the multidrug-resistance protein MRP1. MRP1 is an integral membrane protein that contains an MDR-like core, an N-terminal membrane-bound region and a cytoplasmic linker, and it is expressed in various cerebral cells, as well as in lung, testis and peripheral blood.

### Product Info

<b>Amount :</b>	20 µg / 100 µg
<b>Content :</b>	200 µg/ml of Ab Purified from Bioreactor Concentrate by Protein A/G. Prepared in 10mM PBS with 0.05% BSA & 0.05% azide. Also available WITHOUT BSA & azide at 1.0mg/ml.
<b>Storage condition :</b>	Antibody with azide - store at 2 to 8°C. Antibody without azide - store at -20 to -80°C. Antibody is stable for 24 months. Non-hazardous.

### Application Note

ELISA (For coating, order antibody without BSA); Flow Cytometry (1-2ug/million cells); Western Blot (1-2ug/ml);

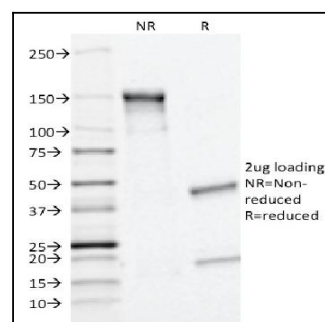


Fig. 1: SDS-PAGE Analysis Purified MRP1/ABCC1 Monoclonal Antibody (MRP1/1343). Confirmation of Integrity and Purity of Antibody.