

### 36-2807: Anti-MTF1 Monoclonal Antibody(Clone: MTF1/2649)

<b>Clonality :</b>	Monoclonal
<b>Clone Name :</b>	MTF1/2649
<b>Application :</b>	IHC
<b>Reactivity :</b>	Human
<b>Gene :</b>	MTF1
<b>Gene ID :</b>	4520
<b>Uniprot ID :</b>	Q14872
<b>Alternative Name :</b>	Metal regulatory transcription factor 1; Metal response element binding transcription factor 1; Metal responsive transcription factor 1; MRE-binding transcription factor 1; MTF1; Transcription factor MTF1; Zinc regulatory factor (ZRF)
<b>Isotype :</b>	Mouse IgG1, kappa
<b>Immunogen Information :</b>	Recombinant full-length human MTF1 protein

#### Description

The metal-responsive element (MRE)-binding transcription factor (MTF-1) stimulates the expression of metallothioneins in response to the exposure of cells to heavy metals. MTF-1 contains six zinc fingers in the DNA binding domain. The phosphorylation of MTF-1 in response to metal exposure appears to play a significant role in the ability of MTF-1 to activate metallothionein transcription. In addition to its role in metallothionein activation, MTF-1 is involved in a post-transcription regulatory complex for ribosomal protein S25. MTF-1, La and p53 inhibit the nuclear export of S25 mRNA in response to nutrient deprivation. Furthermore, MTF-1 acts as a chromatin insulator on integrated transgenes in cultured cells to insulate active loci against chromatin silencing.

#### Product Info

<b>Amount :</b>	20 µg / 100 µg
<b>Content :</b>	200 µg/ml of Ab Purified from Bioreactor Concentrate by Protein A/G. Prepared in 10mM PBS with 0.05% BSA & 0.05% azide. Also available WITHOUT BSA & azide at 1.0mg/ml.
<b>Storage condition :</b>	Antibody with azide - store at 2 to 8°C. Antibody without azide - store at -20 to -80°C. Antibody is stable for 24 months. Non-hazardous.

#### Application Note

Immunohistochemistry (Formalin-fixed) (1-2ug/ml for 30 min at RT)(Staining of formalin-fixed tissues requires heating tissue sections in 10mM Tris with 1mM EDTA, pH 9.0, for 45 min at 95&degC followed by cooling at RT for 20 minutes);

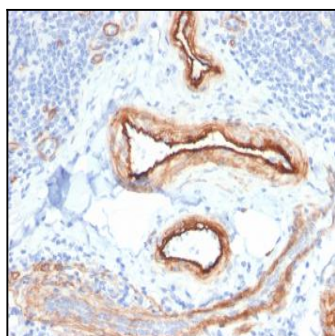


Fig. 1: Formalin-fixed, paraffin-embedded human Renal Cell Carcinoma stained with MTF1 Mouse Monoclonal Antibody (MTF1/2649).

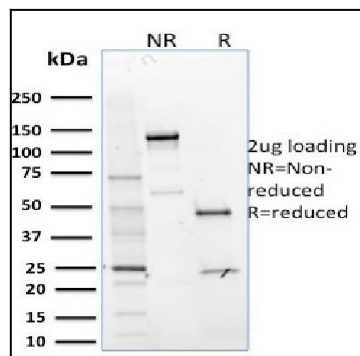


Fig. 2: SDS-PAGE Analysis Purified MTF1 Mouse Monoclonal Antibody (MTF1/2649).  
Confirmation of Purity and Integrity of Antibody.