

36-2808: Anti-MUC1 / CA15-3 / EMA / CD227 (Epithelial Marker) Monoclonal Antibody(Clone: VU-2G7)

Clonality : Monoclonal
Clone Name : VU-2G7
Application : ELISA
Reactivity : Human
Gene : MUC1
Gene ID : 4582
Uniprot ID : P15941

Alternative Name : Breast carcinoma-associated antigen DF3, CA15-3, Carcinoma-associated mucin Episialin, Epithelial Membrane Antigen, H23AG, KL-6, MAM6, MUC-1, MUC-1/SEC, MUC-1/X, MUC1-alpha, MUC1-beta, MUC1-CT, MUC1-NT, MUC1/ZD, Mucin 1 cell surface associated, Mucin-1 subunit beta, Peanut-reactive urinary mucin, PEM, PEMT, Polymorphic epithelial mucin, PUM, Tumor-associated epithelial membrane antigen

Isotype : Mouse IgG1, kappa

Immunogen Information : Synthetic glycosylated MUC1 60mer tandem repeat NH2-(HGVTSAPDT(GalNAc)RPAPGSTAPPAHG)3- COOH, conj μ gated to bovine serum albumin

Description

MAb VU-2G7 reacts with MUC1, a large transmembrane glycoprotein expressed on the ductal surface of normal glandular epithelia. The dominant epitope of VU-2G7 has not been established with 'epitope fingerprinting'. The extra cellular domain of MUC1 largely consists of a highly conserved, O-glycosylated 20 amino acids tandem repeat which can occur 30-100 times per molecule depending on the length of the allele involved. In the vast majority of human carcinomas this protein is up regulated and poorly glycosylated and appears on the cell surface in a non-polarized fashion.

Product Info

Amount : 20 μ g / 100 μ g
Content : 200 μ g/ml of Ab Purified from Bioreactor Concentrate by Protein A/G. Prepared in 10mM PBS with 0.05% BSA & 0.05% azide. Also available WITHOUT BSA & azide at 1.0mg/ml.
Storage condition : Antibody with azide - store at 2 to 8°C. Antibody without azide - store at -20 to -80°C. Antibody is stable for 24 months. Non-hazardous.

Application Note

ELISA (For coating use Ab at 1-5 μ g/ml, order Ab without BSA)

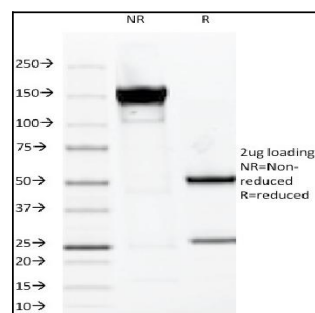


Fig. 1: SDS-PAGE Analysis Purified MUC1 Mouse Monoclonal Antibody (VU-2G7). Confirmation of Integrity and Purity of Antibody.