

36-2845: Anti-Neurofilament (NF-L) (Neuronal Marker) Monoclonal Antibody(Clone: NEFL/2983R)

Clonality :	Monoclonal
Clone Name :	NEFL/2983R
Application :	IHC
Reactivity :	Human, Rat
Gene :	NEFL
Gene ID :	4747
Uniprot ID :	P07196
Alternative Name :	68kDa neurofilament protein, Light molecular weight neurofilament protein, NEFL, Neurofilament light polypeptide 68kDa, Neurofilament light polypeptide, Neurofilament protein, light chain, Neurofilament subunit NF-L, Neurofilament triplet L protein, NF-L, NF68
Isotype :	Rabbit IgG
Immunogen Information :	Recombinant full-length human NEFL protein

Description

This MAb reacts with a 68kDa protein, identified as light sub-unit of neurofilaments (NF-L). Neurofilaments make up the main structural elements of axons and dendrites and are found in neurons, peripheral nerves, and sympathetic ganglion cells. Neurofilaments consist of three major subunits with molecular weights of 68kDa (NF-L), 160kDa (NF-M) and 200kDa (NF-H). Anti-neurofilament stains a number of neural, neuroendocrine, and endocrine tumors. Neuromas, ganglioneuromas, gangliogliomas, ganglioneuroblastomas, and neuroblastomas stain positively for anti-neurofilament. Neurofilaments are also present in paragangliomas as well as adrenal and extra-adrenal pheochromocytomas. Carcinoids, neuroendocrine carcinomas of the skin, and oat cell carcinomas of the lung also express neurofilament.

Product Info

Amount :	20 µg / 100 µg
Content :	200 µg/ml of Ab Purified from Bioreactor Concentrate by Protein A/G. Prepared in 10mM PBS with 0.05% BSA & 0.05% azide. Also available WITHOUT BSA & azide at 1.0mg/ml.
Storage condition :	Antibody with azide - store at 2 to 8°C. Antibody without azide - store at -20 to -80°C. Antibody is stable for 24 months. Non-hazardous.

Application Note

Immunohistochemistry (Formalin-fixed) (0.25-0.5ug/ml for 30 minutes at RT)(Staining of formalin-fixed tissues requires heating tissue sections in 10mM Tris with 1mM EDTA, pH 9.0, for 45 min at 95°C followed by cooling at RT for 20 minutes);

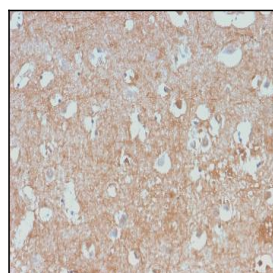


Fig. 1: Formalin-fixed, paraffin-embedded human Cerebellum stained with Neurofilament Rabbit Monoclonal Antibody (NEFL/2983R).

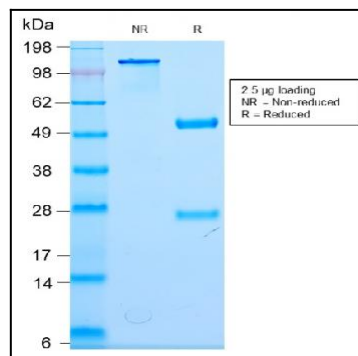


Fig. 2: SDS-PAGE Analysis Purified Neurofilament Rabbit Monoclonal Antibody (NEFL/2983R). Confirmation of Purity and Integrity of Antibody.