

36-2866: Anti-Nucleophosmin (Acute Myeloid Leukemia Marker) Monoclonal Antibody(Clone: NA24)

Clonality :	Monoclonal
Clone Name :	NA24
Application :	FACS,IF,WB,IHC
Reactivity :	Human
Gene :	NPM1
Gene ID :	4869
Uniprot ID :	P06748
Alternative Name :	NO38; NPM; NPM1; Nucleolar phosphoprotein B23; Nucleolar protein NO38; Nucleophosmin (nucleolar phosphoprotein B23 numatrin); Nucleophosmin; Nucleophosmin/nucleoplasmin family member 1; Numatrin
Isotype :	Mouse IgG1, kappa
Immunogen Information :	GST fusion protein containing the N-terminal part of nucleophosmin fused to 14 amino acid of ALK protein

Description

Recognizes a 33kDa glycoprotein, identified as Nucleophosmin (NPM). It is predominantly localized in the nucleus of cells in most tissues. NPM is involved in ribosomal assembly and rRNA transport. It is an abundant protein that is highly phosphorylated by Cdc2 kinase during mitosis. This phosphoprotein moves between the nucleus and the cytoplasm. It is thought to be involved in several processes including regulation of the ARF/p53 pathway. A number of genes are fusion partners, in particular the anaplastic lymphoma kinase gene on chromosome 2. Mutations in exon 12 affecting the C-terminus of the protein are associated with an aberrant cytoplasmic location. Mutations in this gene are associated with acute myeloid leukemia. The antibody may be a useful aid for classification of acute myeloid leukemia.

Product Info

Amount :	20 µg / 100 µg
Content :	200 µg/ml of Ab Purified from Bioreactor Concentrate by Protein A/G. Prepared in 10mM PBS with 0.05% BSA & 0.05% azide. Also available WITHOUT BSA & azide at 1.0mg/ml.
Storage condition :	Antibody with azide - store at 2 to 8°C. Antibody without azide - store at -20 to -80°C. Antibody is stable for 24 months. Non-hazardous.

Application Note

Flow Cytometry (1-2ug/million cells); Immunofluorescence (1-2ug/ml); Western Blot (1-2ug/ml); ,Immunohistochemistry (Formalin-fixed) (1-2ug/ml for 30 minutes at RT),(Staining of formalin-fixed tissues requires heating tissue sections in 10mM Tris with 1mM EDTA, pH 9.0, for 45 min at 95 °C followed by cooling at RT for 20 minutes),

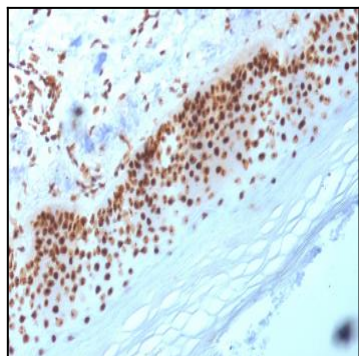


Fig. 1: Formalin-fixed, paraffin-embedded human Skin stained with Nucleophosmin Mouse Monoclonal Antibody (NA24).

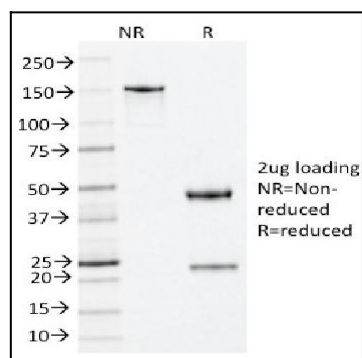


Fig. 2: SDS-PAGE Analysis Purified Nucleophosmin Mouse Monoclonal Antibody (NA24). Confirmation of Integrity and Purity of Antibody.