

## 36-2875: Anti-YBX1 / Y-box Binding Protein 1 / YB-1 (Tumor Biomarker) Monoclonal Antibody(Clone: rYBX1/2430)

<b>Clonality :</b>	Monoclonal
<b>Clone Name :</b>	rYBX1/2430
<b>Application :</b>	IHC
<b>Reactivity :</b>	Human
<b>Gene :</b>	YBX1
<b>Gene ID :</b>	4904
<b>Uniprot ID :</b>	P67809
<b>Alternative Name :</b>	BP-8, CSDA2, CSDB, DBPB, MDR-NF1, NSEP-1, NSEP1, YB-1, YB1
<b>Isotype :</b>	Mouse IgG1, kappa
<b>Immunogen Information :</b>	Recombinant human full-length YBX1 protein

### Description

The specificity of this monoclonal antibody to its intended target was validated by HuProt™ Array, containing more than 19,000, full-length human proteins. Y-box binding protein-1 (YBX1) is the prototypic member of the cold shock protein family that fulfills numerous cellular functions. In the nucleus, YBX1 protein orchestrates transcription of proliferation-related genes, whereas in the cytoplasm it associates with mRNA and directs translation. In human tumor entities, such as breast, lung and prostate cancer, cellular YBX1 expression indicates poor clinical outcome, suggesting that YBX1 is an attractive marker to predict patients' prognosis.

### Product Info

<b>Amount :</b>	20 µg / 100 µg
<b>Content :</b>	200 µg/ml of Ab Purified from Bioreactor Concentrate by Protein A/G. Prepared in 10mM PBS with 0.05% BSA & 0.05% azide. Also available WITHOUT BSA & azide at 1.0mg/ml.
<b>Storage condition :</b>	Antibody with azide - store at 2 to 8°C. Antibody without azide - store at -20 to -80°C. Antibody is stable for 24 months. Non-hazardous.

### Application Note

Immunohistochemistry (Formalin-fixed) (1-2µg/ml for 30 min at RT)(Staining of formalin-fixed tissues requires heating tissue sections in 10mM Tris with 1mM EDTA, pH 9.0, for 45 min at 95°C followed by cooling at RT for 20 minutes);

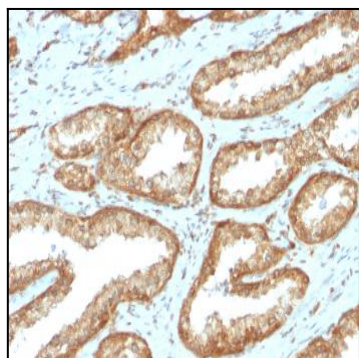


Fig. 1: Formalin-fixed, paraffin-embedded human Prostate Carcinoma stained with YBX1 Mouse Recombinant Monoclonal Antibody (rYBX1/2430).

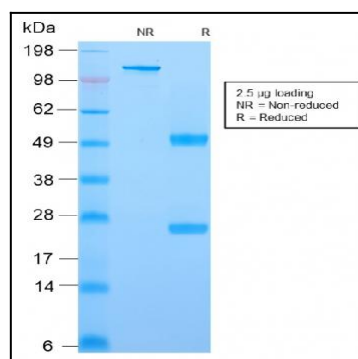


Fig. 2: SDS-PAGE Analysis Purified YBX1 Mouse Recombinant Monoclonal Antibody (rYBX1/2430). Confirmation of Purity and Integrity of Antibody.