

36-2890: Anti-Langerin / CD207 (Marker of Langerhans Cells) Monoclonal Antibody(Clone: LGRN/3136R)

Clonality :	Monoclonal
Clone Name :	LGRN/3136R
Application :	ELISA
Reactivity :	Human
Gene :	CD207
Gene ID :	50489
Uniprot ID :	Q9UJ71
Alternative Name :	C-type lectin domain family 4 member K; CD207; CLEC4K; Langerhans cell specific c type lectin; Langerin
Isotype :	Rabbit IgG
Immunogen Information :	Recombinant fragment (around aa74-213) of human Langerin protein (exact sequence is proprietary)

Description

Langerhans cells (LCs) are a subset of immature dendritic cells (DCs) that specifically localize in the epidermis and other mucosal epithelia. Epidermal LCs possess strong immuno-stimulatory capacity and play a central role in the initiation and regulation of immune responses. Langerin (CD207) is a Ca²⁺-dependent, C-type lectin domain containing, type II transmembrane protein that induces epidermal LCs to differentiate into Birbeck granules (BG). BGs are organelles with superimposing and zipper membranes that influence proper class I type antigen presentation to the circulating T cells. Human spleen, lymph node, thymus, liver, lung and heart express Langerin protein.

Product Info

Amount :	20 µg / 100 µg
Content :	200 µg/ml of Ab Purified from Bioreactor Concentrate by Protein A/G. Prepared in 10mM PBS with 0.05% BSA & 0.05% azide. Also available WITHOUT BSA & azide at 1.0mg/ml.
Storage condition :	Antibody with azide - store at 2 to 8°C. Antibody without azide - store at -20 to -80°C. Antibody is stable for 24 months. Non-hazardous.

Application Note

ELISA (Use Ab at 2-4ug/ml for coating) (Order Ab without BSA);

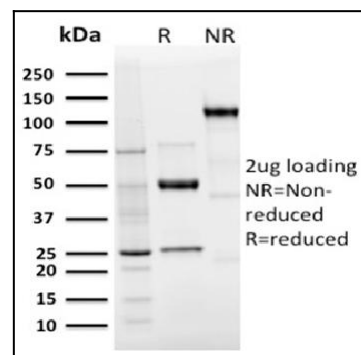


Fig. 1: SDS-PAGE Analysis Purified Langerin Recombinant Rabbit Monoclonal Antibody (LGRN/3136R). Confirmation of Integrity and Purity of Antibody.