

### 36-2924: Anti-CD31 / PECAM-1 (Endothelial Cell Marker) Polyclonal Antibody

<b>Clonality :</b>	Polyclonal
<b>Application :</b>	FACS, WB, IHC
<b>Reactivity :</b>	Human
<b>Gene :</b>	PECAM1
<b>Gene ID :</b>	5175
<b>Uniprot ID :</b>	P16284
<b>Alternative Name :</b>	EndoCAM; PECA1; Platelet Endothelial Cell Adhesion Molecule 1; GPIIA'
<b>Isotype :</b>	Rabbit IgG
<b>Immunogen Information :</b>	Human recombinant CD31 protein

#### Description

CD31 (PECAM-1) is a transmembrane glycoprotein member of the immunoglobulin supergene family of adhesion molecules. CD31 is expressed by stem cells of the hematopoietic system and is primarily used to identify and concentrate these cells for experimental studies as well as for bone marrow transplantation. Anti-CD31 has shown to be highly specific and sensitive for vascular endothelial cells. Staining of nonvascular tumors (excluding hematopoietic neoplasms) is rare. CD31 antibody reacts with normal, benign, and malignant endothelial cells which make up blood vessel lining. The level of CD31 expression can help to determine the degree of tumor angiogenesis, and a high level of CD31 expression may imply a rapidly growing tumor and potentially a predictor of tumor recurrence.

#### Product Info

<b>Amount :</b>	20 µg / 100 µg
<b>Content :</b>	200 µg/ml of Ab Purified by Protein A/G. Prepared in 10mM PBS with 0.05% BSA & 0.05% azide. Also available WITHOUT BSA & azide at 1.0mg/ml.
<b>Storage condition :</b>	Antibody with azide - store at 2 to 8°C. Antibody without azide - store at -20 to -80°C. Antibody is stable for 24 months. Non-hazardous.

#### Application Note

Flow Cytometry (1-2ug/million cells); Western Blot (1-2ug/ml); Immunohistochemistry (Formalin-fixed) (1-2ug/ml for 30 minutes at RT)(Staining of formalin-fixed tissues requires heating tissue sections in 10mM Tris with 1mM EDTA, pH 9.0, for 45 min at 95&degC followed by cooling at RT for 20 minutes)

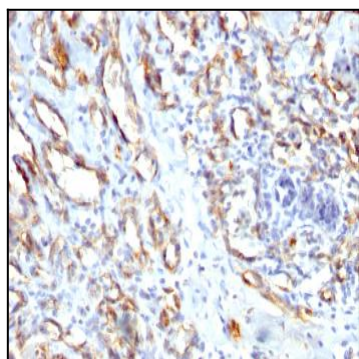


Fig. 1: Formalin-fixed, paraffin-embedded human Angiosarcoma stained with CD31 Rabbit Polyclonal Antibody.

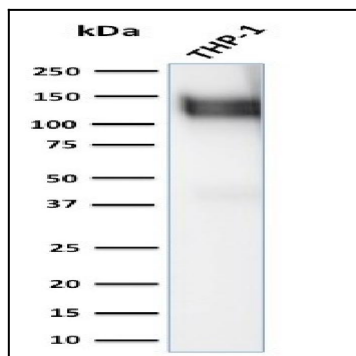


Fig. 2: Western Blot Analysis of human THP-1 cell lysate using CD31 Rabbit Polyclonal Antibody