



### 36-2928: Anti-Prohibitin (Mitochondrial Marker) Monoclonal Antibody(Clone: PHB/1881)

<b>Clonality :</b>	Monoclonal
<b>Clone Name :</b>	PHB/1881
<b>Application :</b>	WB,IHC
<b>Reactivity :</b>	Human
<b>Gene :</b>	PHB
<b>Gene ID :</b>	5245
<b>Uniprot ID :</b>	P35232
<b>Alternative Name :</b>	Epididymis luminal protein 215; Epididymis secretory sperm binding protein Li 54e; HEL 215; HEL S 54e; PHB; PHB1; Prohibitin
<b>Isotype :</b>	Mouse IgG2c, kappa
<b>Immunogen Information :</b>	Recombinant human PHB protein fragment (aa167-261) (exact sequence is proprietary)

#### Description

Recognizes a protein of 30kDa which is identified as Prohibitin, an evolutionarily conserved protein with homologues found in yeast to man. It is located in the inner membrane of mitochondria. Although prohibitin mRNA and protein expression occurs throughout the cell cycle, maximum levels are detected during the G1/S phase transition and minimum levels are seen in S phase and the G2/mitosis boundary. Prohibitin is located exclusively in the mitochondria with the highest concentration on the inner membrane. Prohibitin is an ideal mitochondrial marker. It shows antiproliferative activity and has been proposed to play a role in normal cell cycle regulation, replicative senescence, cellular immortalization, and tumor suppression.

#### Product Info

<b>Amount :</b>	20 µg / 100 µg
<b>Content :</b>	200 µg/ml of Ab Purified from Bioreactor Concentrate by Protein A/G. Prepared in 10mM PBS with 0.05% BSA & 0.05% azide. Also available WITHOUT BSA & azide at 1.0mg/ml.
<b>Storage condition :</b>	Antibody with azide - store at 2 to 8°C. Antibody without azide - store at -20 to -80°C. Antibody is stable for 24 months. Non-hazardous.

#### Application Note

Western Blot (1-2ug/ml);Immunohistochemistry (Formalin-fixed) (1-2ug/ml for 30 minutes at RT)(Staining of formalin-fixed tissues requires heating tissue sections in 10mM Tris with 1mM EDTA, pH 9.0, for 45 min at 95°C followed by cooling at RT for 20 minutes);

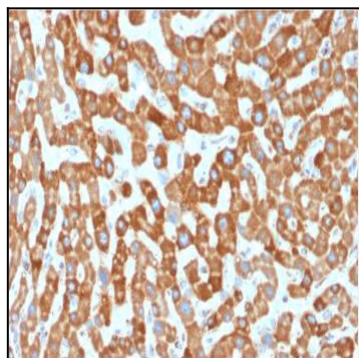


Fig. 1: Formalin-fixed, paraffin-embedded human Liver stained with Prohibitin Mouse Monoclonal Antibody (PHB/1881).

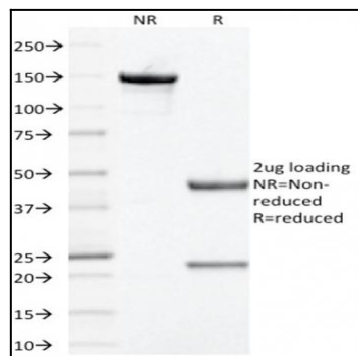


Fig. 2: SDS-PAGE Analysis Purified Prohibitin Mouse Monoclonal Antibody (PHB/1881). Confirmation of Purity and Integrity of Antibody.

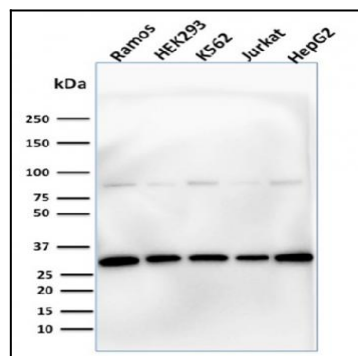


Fig. 3: Western Blot Analysis of human Ramos, HEK293, K562, Jurkat, HepG2, using Prohibitin Mouse Monoclonal Antibody (PHB/1881).