

36-2980: Anti-ATRX / RAD54 (Alpha Thalassemia Mental Retardation) Monoclonal Antibody (Clone: ATRX/2900R)

Clonality :	Monoclonal
Clone Name :	ATRX/2900R
Application :	IHC
Reactivity :	Human
Gene :	ATRX
Gene ID :	546
Uniprot ID :	P46100
Alternative Name :	Alpha thalassemia/mental retardation syndrome X linked homolog; ATP-dependent helicase ATRX; ATR2; ATRX; DNA-dependent ATPase and helicase; MRXHF1; RAD54; RAD54L; SFM1; SHS; Transcriptional regulator ATRX; X-linked helicase II; X-linked nuclear protein; XH2; XNP; Znf-HX
Isotype :	Rabbit IgG
Immunogen Information :	Recombinant human ATRX protein

Description

ATRX is a member of the Snf2 family of helicase/ATPases, which contribute to the remodeling of the nucleosome structure in an ATP-dependent manner, and facilitate the initiation of transcription and replication. Structurally, ATRX contains a PHD zinc finger motif. ATRX is regulated throughout the cell cycle where it is differentially distributed within the nucleus. During interphase, ATRX predominately associates with the nuclear matrix, while during mitosis, ATRX localizes with condensed chromatin. At the onset of M phase, phosphorylation rapidly induces this redistribution of ATRX to the short arms of human acrocentric chromosomes, where it then specifically complexes with heterochromatin protein 1 thalassemia or ATRX syndrome

Product Info

Amount :	20 µg / 100 µg
Content :	200 µg/ml of Ab Purified from Bioreactor Concentrate by Protein A/G. Prepared in 10mM PBS with 0.05% BSA & 0.05% azide. Also available WITHOUT BSA & azide at 1.0mg/ml.
Storage condition :	Antibody with azide - store at 2 to 8°C. Antibody without azide - store at -20 to -80°C. Antibody is stable for 24 months. Non-hazardous.

Application Note

Immunohistochemistry (Formalin-fixed) (1-2ug/ml for 30 minutes at RT)(Staining of formalin-fixed tissues is enhanced by heating tissue sections in 10mM Tris with 1mM EDTA Buffer, pH 9.0, for 45 min at 95°C followed by cooling at RT for 20 minutes)

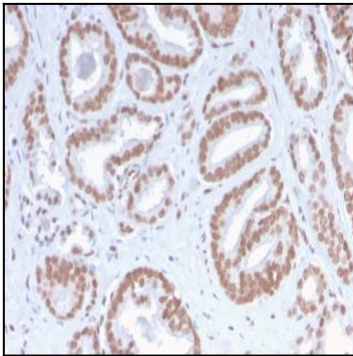


Fig. 1: Formalin-fixed, paraffin-embedded human Prostate Carcinoma stained with ATRX Rabbit Recombinant Monoclonal Antibody (ATR/2900R).

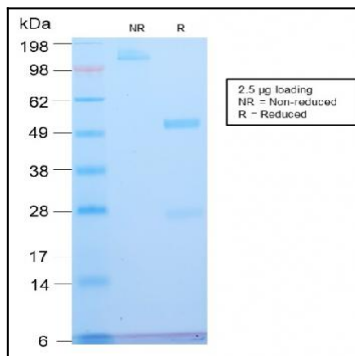


Fig. 2: SDS-PAGE Analysis Purified ATRX Rabbit Recombinant Monoclonal Antibody (ATR/2900R). Confirmation of Integrity and Purity of Antibody.