

36-3083: Anti-Rb1 (Tumor Suppressor Protein) Monoclonal Antibody(Clone: 1F8)

Clonality :	Monoclonal
Clone Name :	1F8
Application :	WB,IP,IHC
Reactivity :	Human, Mouse
Gene :	RB1
Gene ID :	5925
Uniprot ID :	P06400
Alternative Name :	OSRC; Osteosarcoma; p105-Rb; PP105; pp110; pRb; Prepro retinoblastoma associated protein; RB1; Retinoblastoma 1; Retinoblastoma-associated protein
Isotype :	Mouse IgG1, kappa
Immunogen Information :	Recombinant human Rb1 protein fragment of 283 amino acid residues.

Description

Recognizes a 105kDa phosphoprotein, identified as retinoblastoma (Rb) gene product. Its epitope is localized between aa 703-772. It shows no cross reaction with p107 or p130. It specifically stains the nuclei of BT-20 cells and primary human foreskin fibroblast (HFF) cells. It does not stain the Rb-negative BT549 cells. It reacts with the hyperphosphorylated as well as the un (under) phosphorylated form of the Rb protein. Retinoblastoma gene product plays a key role in cell cycle control. It has been identified as a tumor suppressor gene whose loss of its function leads to tumor development. It is widely expressed in a variety of human tissues including breast, esophageal, squamous cell and cervical carcinoma.

Product Info

Amount :	20 µg / 100 µg
Content :	200 µg/ml of Ab Purified from Bioreactor Concentrate by Protein A/G. Prepared in 10mM PBS with 0.05% BSA & 0.05% azide. Also available WITHOUT BSA & azide at 1.0mg/ml.
Storage condition :	Antibody with azide - store at 2 to 8°C. Antibody without azide - store at -20 to -80°C. Antibody is stable for 24 months. Non-hazardous.

Application Note

Western Blot (1-2ug/ml); Immunoprecipitation (1-2ug/500ug protein lysate);Immunohistochemistry (Formalin-fixed) (1-2ug/ml for 30 minutes at RT)(Staining of formalin-fixed tissues requires heating tissue sections in 10mM Tris with 1mM EDTA, pH 9.0, for 45 min at 95°C followed by cooling at RT for 20 minutes);

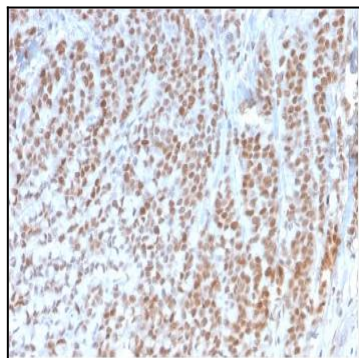


Fig. 1: Formalin-fixed, paraffin-embedded human Colon stained with Retinoblastoma (Rb1) Monoclonal Antibody (1F8).

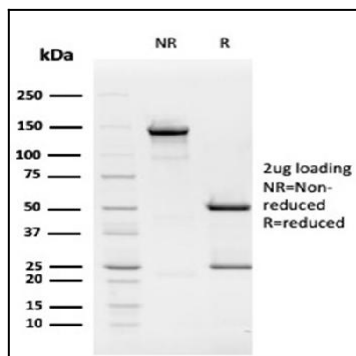


Fig. 2: SDS-PAGE Analysis Purified Retinoblastoma (Rb1) Monoclonal Antibody (1F8).
Confirmation of Integrity and Purity of Antibody