

36-3097: Anti-RET Proto-oncogene Monoclonal Antibody(Clone: RET/2795)

Clonality :	Monoclonal
Clone Name :	RET/2795
Application :	IHC
Reactivity :	Human
Gene :	RET
Gene ID :	5979
Uniprot ID :	P07949
Alternative Name :	Cadherin family member 12 (CDHF12); Cadherin related family member 16 (CDHR16); ELKS; HSCR1; Hydroxyaryl protein kinase; MEN2A; MEN2B; MTC1; Multiple endocrine neoplasia and medullary thyroid carcinoma 1; Oncogene RET; Proto-oncogene c-Ret; Proto-oncogene tyrosine-protein kinase receptor ret; PTC; RET; RET ELE1; RET51; RET9
Isotype :	Mouse IgG1, kappa
Immunogen Information :	Recombinant fragment (around aa 702-848) of human RET protein (exact sequence is proprietary)

Description

The Ret proto-oncogene is structurally related to the growing family of tyrosine kinase transmembrane receptors and is involved in GDNF signaling. RET expression is reported in several regions of the central nervous system; in the developing cranial nerve ganglia and a subset of cells within dorsal root ganglia, in motor neurons in the spinal cord and hindbrain, in neuro-retina and the growing tips of the renal collecting ducts in developing kidney. Alterations in RET gene are associated with diseases including papillary thyroid carcinoma, multiple endocrine neoplasia (type 2A and 2B), familial medullary thyroid carcinoma, and a congenital developmental disorder known as Hirschsprung's disease.

Product Info

Amount :	20 µg / 100 µg
Content :	200 µg/ml of Ab Purified from Bioreactor Concentrate by Protein A/G. Prepared in 10mM PBS with 0.05% BSA & 0.05% azide. Also available WITHOUT BSA & azide at 1.0mg/ml.
Storage condition :	Antibody with azide - store at 2 to 8°C. Antibody without azide - store at -20 to -80°C. Antibody is stable for 24 months. Non-hazardous.

Application Note

Immunohistochemistry (Formalin-fixed) (1-2ug/ml for 30 minutes at RT)(Staining of formalin-fixed tissues requires heating tissue sections in 10mM Tris with 1mM EDTA, pH 9.0, for 45 min at 95°C followed by cooling at RT for 20 minutes)

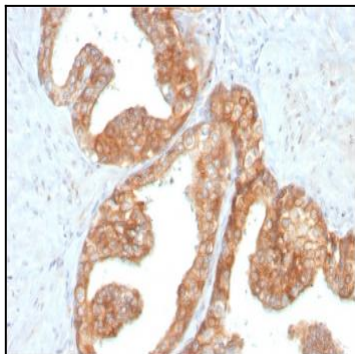


Fig. 1: Formalin-fixed, paraffin-embedded human Prostate Carcinoma stained with RET Mouse Monoclonal Antibody (RET/2795).

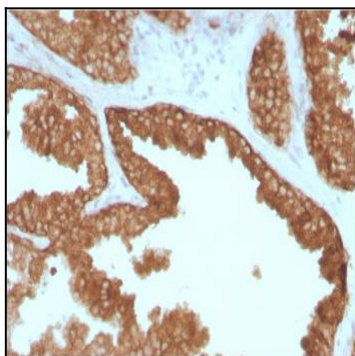


Fig. 2: Formalin-fixed, paraffin-embedded human Prostate Carcinoma stained with RET Mouse Monoclonal Antibody (RET/2795).

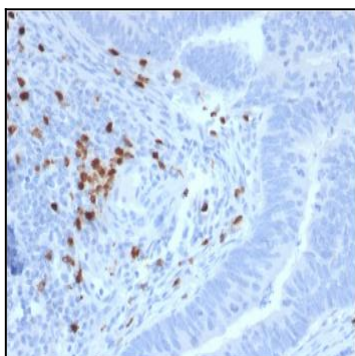


Fig. 3: Formalin-fixed, paraffin-embedded human Colon Carcinoma stained with RET Mouse Monoclonal Antibody (RET/2795).

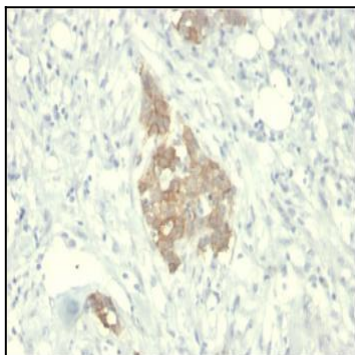


Fig. 4: Formalin-fixed, paraffin-embedded human Breast Carcinoma stained with RET Mouse Monoclonal Antibody (RET/2795).

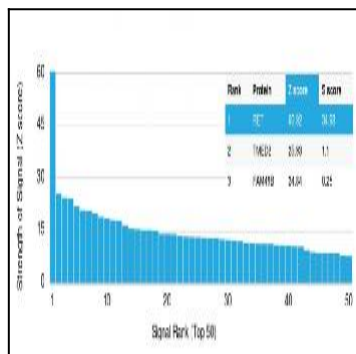


Fig. 5: Analysis of Protein Array containing more than 19,000 full-length human proteins using RET Mouse Monoclonal Antibody (RET/2795). Z- and S- Score: The Z-score represents the strength of a signal that a monoclonal antibody (MAb) (in combination with a fluorescently-tagged anti-IgG secondary antibody) produces when binding to a particular protein on the HuProt™ array. Z-scores are described in units of standard deviations (SD's) above the mean value of all signals generated on that array. If targets on HuProt™ are arranged in descending order of the Z-score, the S-score is the difference (also in units of SD's) between the Z-score. S-score therefore represents the relative target specificity of a MAb to its intended target. A MAb is considered to specific to its intended target, if the MAb has an S-score of at least 2.5. For example, if a MAb binds to protein X with a Z-score of 43 and to protein Y with a Z-score of 14, then the S-score for the binding of that MAb to protein X is equal to 29.