

### 36-3099: Anti-Bcl-X (Apoptosis Marker) Monoclonal Antibody(Clone: BCL2L1/1762)

<b>Clonality :</b>	Monoclonal
<b>Clone Name :</b>	BCL2L1/1762
<b>Application :</b>	ELISA
<b>Reactivity :</b>	Human
<b>Gene :</b>	BCL2L1
<b>Gene ID :</b>	598
<b>Uniprot ID :</b>	Q07817
<b>Alternative Name :</b>	Apoptosis regulator Bcl-X, B cell lymphoma 2 like, BCL XL/S, Bcl-2-like protein 1, Bcl2-L-1, BCL2L, Bcl2l1, BCLX, BclXL, BclXs, Protein phosphatase 1 regulatory subunit 52 (PPP1R52)
<b>Isotype :</b>	Mouse IgG2b, kappa
<b>Immunogen Information :</b>	Recombinant human BCL2L1 protein fragment (around aa 1-135) (exact sequence is proprietary)

#### Description

Recognizes a protein of 27kDa, identified as the Bcl-X protein. This MAb shows no cross-reaction with Bcl-2 or Bax protein. Bcl-X has two isoforms, Bcl-XL (long), a 241-amino acid protein which suppresses cell death. And Bcl-XS (short), a 178-amino acid protein lacking a 63-amino acid domain which functions as a dominant inhibitor of Bcl-2.

#### Product Info

<b>Amount :</b>	20 µg / 100 µg
<b>Content :</b>	200 µg/ml of Ab Purified from Bioreactor Concentrate by Protein A/G. Prepared in 10mM PBS with 0.05% BSA & 0.05% azide. Also available WITHOUT BSA & azide at 1.0mg/ml.
<b>Storage condition :</b>	Antibody with azide - store at 2 to 8°C. Antibody without azide - store at -20 to -80°C. Antibody is stable for 24 months. Non-hazardous.

#### Application Note

ELISA (For coating use Ab at 1-5ug/ml, order Ab without BSA)

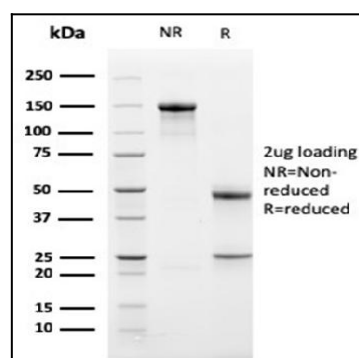


Fig. 1: SDS-PAGE Analysis Purified Bcl-x Mouse Monoclonal Antibody (BCL2L1/1762). Confirmation of Purity and Integrity of Antibody.