

36-3101: Anti-Bcl-X (Apoptosis Marker) Monoclonal Antibody(Clone: BCL2L1/2406)

Clonality :	Monoclonal
Clone Name :	BCL2L1/2406
Application :	IHC
Reactivity :	Human
Gene :	BCL2L1
Gene ID :	598
Uniprot ID :	Q07817
Alternative Name :	Apoptosis regulator Bcl-X, B cell lymphoma 2 like, BCL XL/S, Bcl-2-like protein 1, Bcl2-L-1, BCL2L, Bcl2l1, BCLX, BclXL, BclXs, Protein phosphatase 1 regulatory subunit 52 (PPP1R52)
Isotype :	Mouse IgG
Immunogen Information :	Recombinant human BCL2L1 protein fragment (around aa 1-135) (exact sequence is proprietary)

Description

Recognizes a protein of 27kDa, identified as the Bcl-X protein. This MAb shows no cross-reaction with Bcl-2 or Bax protein. Bcl-X has two isoforms, Bcl-XL (long), a 241-amino acid protein which suppresses cell death. And Bcl-XS (short), a 178-amino acid protein lacking a 63-amino acid domain which functions as a dominant inhibitor of Bcl-2.

Product Info

Amount :	20 µg / 100 µg
Content :	200 µg/ml of Ab Purified from Bioreactor Concentrate by Protein A/G. Prepared in 10mM PBS with 0.05% BSA & 0.05% azide. Also available WITHOUT BSA & azide at 1.0mg/ml.
Storage condition :	Antibody with azide - store at 2 to 8°C. Antibody without azide - store at -20 to -80°C. Antibody is stable for 24 months. Non-hazardous.

Application Note

Immunohistochemistry (Formalin-fixed) (1-2ug/ml for 30 minutes at RT),(Staining of formalin-fixed tissues requires heating tissue sections in 10mM Tris with 1mM EDTA, pH 9.0, for 45 min at 95 °C followed by cooling at RT for 20 minutes),

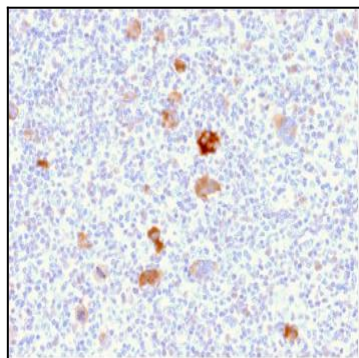


Fig. 1: SDS-PAGE Analysis Purified Bcl-x Mouse Monoclonal Antibody (BCL2L1/2406). Confirmation of Purity and Integrity of Antibody.

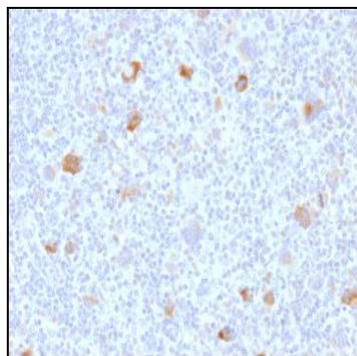


Fig. 2: Formalin-fixed, paraffin-embedded Hodgkin's lymphoma stained with Bcl-x Mouse Monoclonal Antibody (BCL2L1/2406).

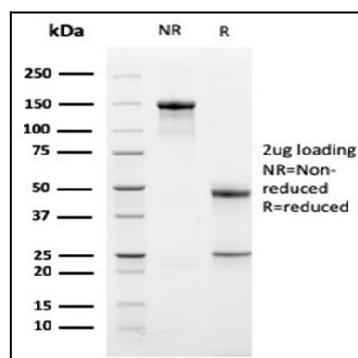


Fig. 3: SDS-PAGE Analysis Purified Bcl-x Mouse Monoclonal Antibody (BCL2L1/2406). Confirmation of Purity and Integrity of Antibody.