

36-3105: Anti-Bcl-6 (Follicular Lymphoma Marker) Monoclonal Antibody(Clone: rBCL6/1718)

Clonality :	Monoclonal
Clone Name :	rBCL6/1718
Application :	IHC
Reactivity :	Human
Gene :	BCL6
Gene ID :	604
Uniprot ID :	P41182
Alternative Name :	B-cell lymphoma 5 protein; B-Cell Lymphoma 6 Protein; BCL5; BCL6; BCL6A; cys his2 zinc finger transcription factor; Lymphoma Associated Zinc Finger Gene On Chromosome 3 (LAZ3); Zinc finger and BTB domain-containing protein 27 (ZBTB27); Zinc Finger Protein 51 (ZNF51); zinc finger transcription factor BCL6S
Isotype :	Mouse IgG1, kappa
Immunogen Information :	Recombinant human bcl-6 protein fragment (aa256-389) (exact sequence is proprietary)

Description

Recognizes a protein of 95kDa, which is identified as Bcl-6. Antibody to bcl-6 is helpful in a number of diagnostic settings: (1) In the differential diagnosis of small B-cell lymphoma. Follicular lymphoma will show bcl-6 (and CD10) positivity whereas other small B-cell lymphomas are usually negative. (2) Bcl-6 is an important prognostic marker in diffuse large B-cell lymphomas (DLBCL), where CD10, bcl-6 and MUM1/IRF4 are used to identify germinal center and activated B-cell phenotypes. (3) Bcl-6 can be valuable in distinguishing classical Hodgkin lymphoma from nodular lymphocyte predominant Hodgkin lymphoma (NLPHL). The Reed-Sternberg cells of classical Hodgkin lymphoma are bcl-6 negative whereas the large ('LH') cells of NLPHL are bcl-6 positive. In contrast, anti-Bcl-6 rarely stains mantle-cell lymphoma and MALT lymphoma.

Product Info

Amount :	20 µg / 100 µg
Content :	200 µg/ml of Ab Purified from Bioreactor Concentrate by Protein A/G. Prepared in 10mM PBS with 0.05% BSA & 0.05% azide. Also available WITHOUT BSA & azide at 1.0mg/ml.
Storage condition :	Antibody with azide - store at 2 to 8°C. Antibody without azide - store at -20 to -80°C. Antibody is stable for 24 months. Non-hazardous.

Application Note

Immunohistochemistry (Formalin-fixed) (1-2ug/ml for 30 minutes at RT)(Staining of formalin-fixed tissues requires heating tissue sections in 10mM Tris with 1mM EDTA, pH 9.0, for 45 min at 95°C followed by cooling at RT for 20 minutes)

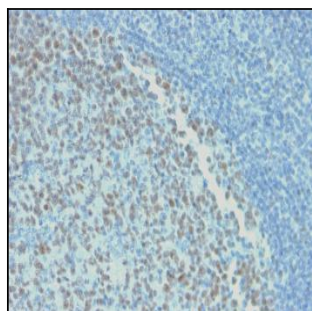


Fig. 1: Formalin-fixed, paraffin-embedded human Tonsil stained with BCL-6 Mouse Recombinant Monoclonal Antibody (rBCL6/1718).

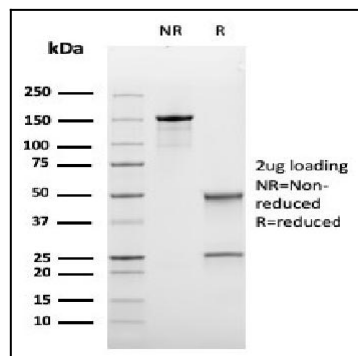


Fig. 2: SDS-PAGE Analysis Purified BCL-6 Mouse Recombinant Monoclonal Antibody (rBCL6/1718). Confirmation of Integrity and Purity of Antibody.