

36-3106: Anti-Bcl-6 (Follicular Lymphoma Marker) Monoclonal Antibody(Clone: rBCL6/1475)

Clonality :	Monoclonal
Clone Name :	rBCL6/1475
Application :	WB
Reactivity :	Human
Gene :	BCL6
Gene ID :	604
Uniprot ID :	P41182
Alternative Name :	B-cell lymphoma 5 protein (BCL5); B-Cell Lymphoma 6 Protein; BCL6A; cys his2 zinc finger transcription factor; Lymphoma Associated Zinc Finger Gene On Chromosome 3 (LAZ3); Zinc finger and BTB domain-containing protein 27 (ZBTB27); Zinc Finger Protein 51 (ZNF51); zinc finger transcription factor BCL6S
Isotype :	Mouse IgG1, kappa
Immunogen Information :	Recombinant human bcl-6 protein fragment (around aa256-389) (exact sequence is proprietary)

Description

The specificity of this monoclonal antibody to its intended target was validated by HuProt™ Array, containing more than 19,000, full-length human proteins. Recognizes a protein of 95kDa, which is identified as Bcl-6. Antibody to bcl-6 is helpful in a number of diagnostic settings: (1) In the differential diagnosis of small B-cell lymphoma. Follicular lymphoma will show bcl-6 (and CD10) positivity whereas other small B-cell lymphomas are usually negative. (2) Bcl-6 is an important prognostic marker in diffuse large B-cell lymphomas (DLBCL), where CD10, bcl-6 and MUM1/IRF4 are used to identify germinal center and activated B-cell phenotypes. (3) Bcl-6 can be valuable in distinguishing classical Hodgkin lymphoma from nodular lymphocyte predominant Hodgkin lymphoma (NLPHL). The Reed-Sternberg cells of classical Hodgkin lymphoma are bcl-6 negative whereas the large ('LH') cells of NLPHL are bcl-6 positive. In contrast, anti-Bcl-6 rarely stains mantle-cell lymphoma and MALT lymphoma.

Product Info

Amount :	20 µg / 100 µg
Content :	200 µg/ml of Ab Purified from Bioreactor Concentrate by Protein A/G. Prepared in 10mM PBS with 0.05% BSA & 0.05% azide. Also available WITHOUT BSA & azide at 1.0mg/ml.
Storage condition :	Antibody with azide – store at 2 to 8°C. Antibody without azide – store at -20 to -80°C. Antibody is stable for 24 months. Non-hazardous.

Application Note

Western Blot (1-2ug/ml);

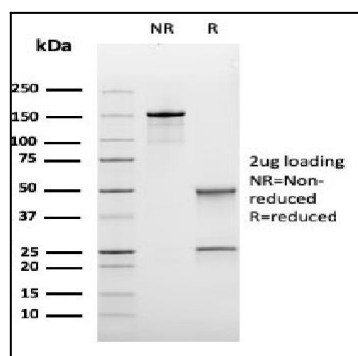


Fig. 1: SDS-PAGE Analysis Purified bcl-6 Recombinant Mouse Monoclonal Antibody (rBCL6/1475). Confirmation of Purity and Integrity of Antibody.