

36-3117: Anti-Replication Protein A2 (RPA2) Monoclonal Antibody(Clone: RPA2/3140R)

Clonality :	Monoclonal
Clone Name :	RPA2/3140R
Application :	WB
Reactivity :	Human
Gene :	RPA2
Gene ID :	6118
Uniprot ID :	P15927
Alternative Name :	p32; p34; REPA2; Replication protein A 32kDa subunit; Replication protein A 34kDa subunit; Replication protein A2; RF-A protein 2; Rf-A2; RFA; RP-A p32; RP-A p34; RP21C; RPA32; RPA34; RpLP1; RpP2
Isotype :	Rabbit IgG
Immunogen Information :	Recombinant human full-length Replication protein A2 (RPA2) protein

Description

Recognizes a protein of 34kDa, identified as a subunit of Replication Protein A (RPA) (also known as human single-stranded DNA binding protein, or HSSB). RPA from human cells is a stable heterotrimer of 70kDa, 32-34kDa, and 11-14kDa subunits (RPA70, RPA32, and RPA14 respectively). It is involved in DNA replication, repair, and recombination. RPA is required for the SV40 large tumor antigen-catalyzed unwinding of SV40 DNA and stimulates DNA polymerase (pol) alpha and delta. RPA34 is phosphorylated at the G1/S boundary of the cell cycle or upon exposure of cells to DNA damage-inducing agents including ionizing and UV radiation.

Product Info

Amount :	20 µg / 100 µg
Content :	200 µg/ml of Ab Purified from Bioreactor Concentrate by Protein A/G. Prepared in 10mM PBS with 0.05% BSA & 0.05% azide. Also available WITHOUT BSA & azide at 1.0mg/ml.
Storage condition :	Antibody with azide - store at 2 to 8°C. Antibody without azide - store at -20 to -80°C. Antibody is stable for 24 months. Non-hazardous.

Application Note

Western Blot (1-2ug/ml);

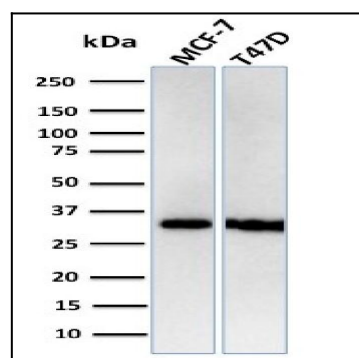


Fig. 1: Western Blot Analysis of Human MCF-7, T47D cell lysates using RPA2 Recombinant Rabbit Monoclonal Antibody (RPA2/3140R).