

## 36-3185: Anti-Spastin Monoclonal Antibody(Clone: Sp 6C6)

<b>Clonality :</b>	Monoclonal
<b>Clone Name :</b>	Sp 6C6
<b>Application :</b>	IF,WB
<b>Reactivity :</b>	Human, Mouse, Rat
<b>Gene :</b>	SPAST
<b>Gene ID :</b>	6683
<b>Uniprot ID :</b>	Q9UP0
<b>Alternative Name :</b>	ADPSP; FSP2; Spast; Spatin; SPG4
<b>Isotype :</b>	Mouse IgG2a, kappa
<b>Immunogen Information :</b>	Recombinant full-length human Spastin protein.

### Description

The AAA protein family members share an ATPase domain and have roles in various cellular processes including intracellular motility, membrane trafficking, proteolysis, protein folding and organelle biogenesis. Spastin, a member of the AAA protein family, is a 616 amino acid protein and is involved in the function or assembly of nuclear protein complexes. The Spastin protein is expressed ubiquitously and localizes to the nucleus and the cytoplasm, where it may also be involved in microtubule dynamics. Mutations in the Spastin gene (SPAST, SPG4) cause the most common form of spastic paraplegia 4, an autosomal dominant form of hereditary spastic paraplegia (HSP). HSPs comprise a group of inherited neurological disorders characterized by spastic lower extremity weakness due to a length-dependent, retrograde axonopathy of corticospinal motor neurons. SPAST-specific mutations account for approximately 40% of all autosomal dominant HSPs.

### Product Info

<b>Amount :</b>	20 µg / 100 µg
<b>Content :</b>	200 µg/ml of Ab Purified from Bioreactor Concentrate by Protein A/G. Prepared in 10mM PBS with 0.05% BSA & 0.05% azide. Also available WITHOUT BSA & azide at 1.0mg/ml.
<b>Storage condition :</b>	Antibody with azide - store at 2 to 8°C. Antibody without azide - store at -20 to -80°C. Antibody is stable for 24 months. Non-hazardous.

### Application Note

Immunofluorescence (1-2ug/ml); ,Western Blot (1-2ug/ml),

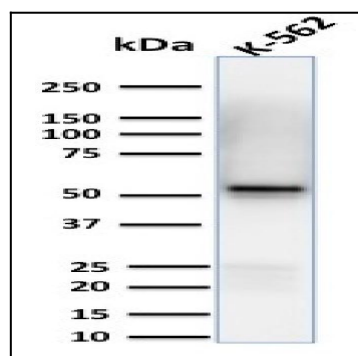


Fig. 1: Western Blot Analysis of human K-562 cell lysates using Spastin Mouse Monoclonal Antibody (Sp 6C6).

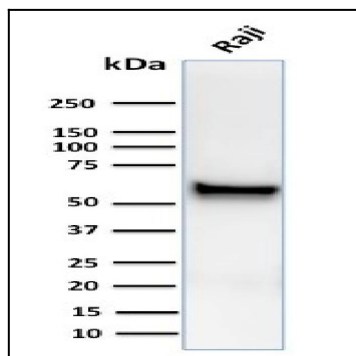


Fig. 2: Western Blot Analysis of human Raji cell lysates using Spastin Mouse Monoclonal Antibody (Sp 6C6).

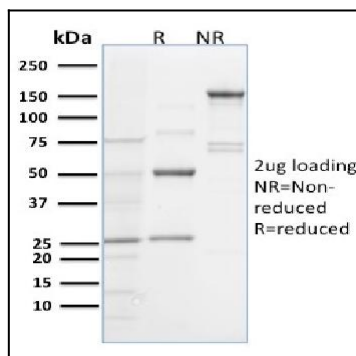


Fig. 3: SDS-PAGE Analysis Purified Spastin Mouse Monoclonal Antibody (Sp 6C6). Confirmation of Purity and Integrity of Antibody.