

36-3205: Anti-Spectrin beta III (SPTBN2) Monoclonal Antibody(Clone: SPTBN2/2894R)

Clonality :	Monoclonal
Clone Name :	SPTBN2/2894R
Application :	FACS, WB, IHC
Reactivity :	Human
Gene :	SPTBN2
Gene ID :	6712
Uniprot ID :	O15020
Alternative Name :	Beta III spectrin; SCA5; Spectrin beta chain brain 2; Spectrin beta non-erythrocytic 2; Spectrin non-erythroid beta chain 2; Spinocerebellar ataxia 5; SPTBN2
Isotype :	Rabbit IgG
Immunogen Information :	Recombinant human SPTBN2 fragment (aa356-475) (exact sequence is proprietary)

Description

Spectrin is an actin binding protein that is a major component of the plasma membrane skeleton. Spectrins function as membrane organizers and stabilizers by forming dimers, tetramers and higher polymers. Vertebrate spectrins have two alpha-subunits (alpha-I/alpha-II) four beta-subunits (beta-I-beta-IV) and a beta-H subunit creating diversity and specialization of function. Spectrin III is highly expressed in brain, kidney, pancreas and liver, and at lower levels in lung and placenta. Spectrin beta 3 is primarily expressed in nervous tissues with highest expression levels in the cerebellum, where it is found in Purkinje cell soma and dendrites.

Product Info

Amount :	20 µg / 100 µg
Content :	200 µg/ml of Ab Purified from Bioreactor Concentrate by Protein A/G. Prepared in 10mM PBS with 0.05% BSA & 0.05% azide. Also available WITHOUT BSA & azide at 1.0mg/ml.
Storage condition :	Antibody with azide - store at 2 to 8°C. Antibody without azide - store at -20 to -80°C. Antibody is stable for 24 months. Non-hazardous.

Application Note

Flow Cytometry (1-2ug/million cells); (ELISA (Use Ab at 2-4ug/ml for coating) (Order Ab without BSA); Western Blot (1-2ug/ml); Immunohistochemistry (Formalin-fixed) (1-2ug/ml for 30 minutes at RT) (Staining of formalin-fixed tissues requires heating tissue sections in 10mM Tris with 1mM EDTA, pH 9.0, for 45 min at 95°C followed by cooling at RT for 20 minutes);

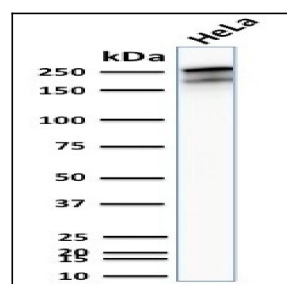


Fig. 1: Western Blot Analysis of HeLa cell lysates using Spectrin beta III Rabbit Recombinant Monoclonal (SPTBN2/2894R).

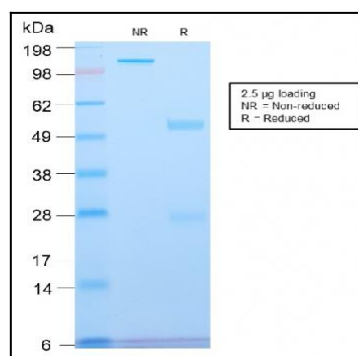


Fig. 2: SDS-PAGE Analysis Purified Spectrin beta III Rabbit Recombinant Monoclonal (SPTBN2/2894R). Confirmation of Integrity and Purity of Antibody.

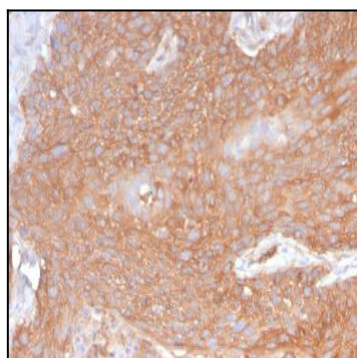


Fig. 3: Formalin-fixed, paraffin-embedded human Pancreatic Cancer stained with Spectrin beta III Rabbit Recombinant Monoclonal (SPTBN2/2894R).

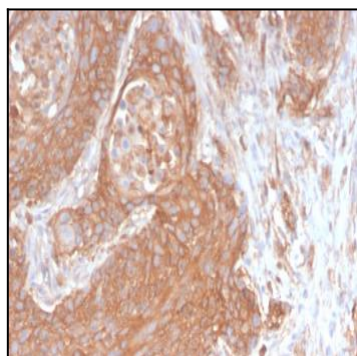


Fig. 4: Formalin-fixed, paraffin-embedded human Pancreatic Cancer stained with Spectrin beta III Rabbit Recombinant Monoclonal (SPTBN2/2894R).

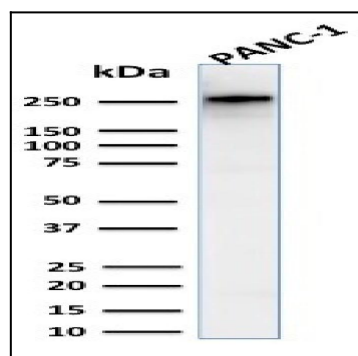


Fig. 5: Western Blot Analysis of Human PANC-1 cell lysate using Spectrin beta III Rabbit Recombinant Monoclonal (SPTBN2/2894R).

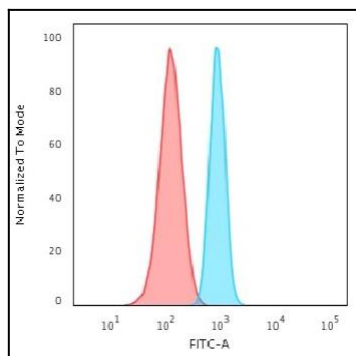


Fig. 6: Flow Cytometric Analysis of HeLa cells using Spectrin beta III Rabbit Recombinant Monoclonal (SPTBN2/2894R) followed by Goat anti-rabbit IgG-CF488 (Blue); Isotype Control (Red).