

36-3207: Anti-Spectrin beta III (SPTBN2) Monoclonal Antibody(Clone: SPTBN2/3142R)

| | |
|--------------------------------|---------------------------------------------------------------------------------------------------------------------------------------------------------------|
| Clonality : | Monoclonal |
| Clone Name : | SPTBN2/3142R |
| Application : | ELISA, WB, FACS, IF, IHC |
| Reactivity : | Human |
| Gene : | SPTBN2 |
| Gene ID : | 6712 |
| Uniprot ID : | O15020 |
| Alternative Name : | Beta III spectrin; SCA5; Spectrin beta chain brain 2; Spectrin beta non-erythrocytic 2; Spectrin non-erythroid beta chain 2; Spinocerebellar ataxia 5; SPTBN2 |
| Isotype : | Rabbit IgG |
| Immunogen Information : | Recombinant fragment (around aa356-475) of human SPTBN2 protein (exact sequence is proprietary) |

Description

Spectrin is an actin binding protein that is a major component of the plasma membrane skeleton. Spectrins function as membrane organizers and stabilizers by forming dimers, tetramers and higher polymers. Vertebrate spectrins have two alpha-subunits (alpha-I/alpha-II) four beta-subunits (beta-I-beta-IV) and a beta-H subunit creating diversity and specialization of function. Spectrin III is highly expressed in brain, kidney, pancreas and liver, and at lower levels in lung and placenta. Spectrin beta 3 is primarily expressed in nervous tissues with highest expression levels in the cerebellum, where it is found in Purkinje cell soma and dendrites.

Product Info

| | |
|----------------------------|-------------------------------------------------------------------------------------------------------------------------------------------------------------------------|
| Amount : | 20 µg / 100 µg |
| Content : | 200 µg/ml of Ab Purified from Bioreactor Concentrate by Protein A/G. Prepared in 10mM PBS with 0.05% BSA & 0.05% azide. Also available WITHOUT BSA & azide at 1.0mg/ml. |
| Storage condition : | Antibody with azide - store at 2 to 8°C. Antibody without azide - store at -20 to -80°C. Antibody is stable for 24 months. Non-hazardous. |

Application Note

ELISA (Use Ab at 2-4ug/ml for coating) (Order Ab without BSA); Western Blot (1-2ug/ml); Flow Cytometry (1-2ug/million cells) Immunofluorescence (1-2ug/ml); Immunohistochemistry (Formalin-fixed) (1-2ug/ml for 30 minutes at RT) (Staining of formalin-fixed tissues requires heating tissue sections in 10mM Tris with 1mM EDTA, pH 9.0, for 45 min at 95°C followed by cooling at RT for 20 minutes);

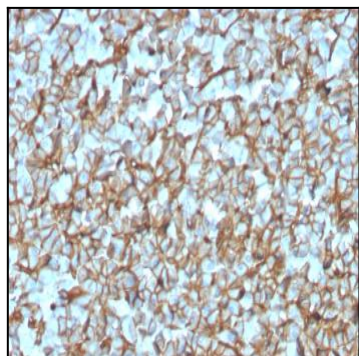


Fig. 1: Formalin-fixed, paraffin-embedded human Pancreas stained with Spectrin beta III Recombinant Rabbit Monoclonal (SPTBN2/3142R).

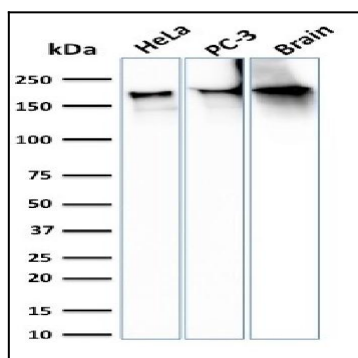


Fig. 2: Western Blot Analysis of HeLa, PC-3 cells and Brain tissue lysate using Spectrin beta III Recombinant Rabbit Monoclonal (SPTBN2/3142R).

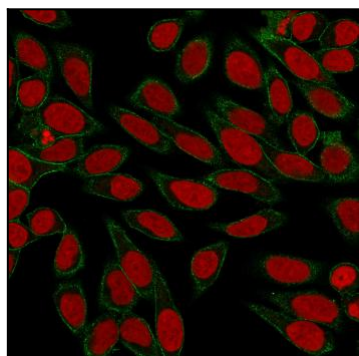


Fig. 3: Immunofluorescence Analysis of HeLa cells labeling Spectrin Beta III with Spectrin beta III Recombinant Rabbit Monoclonal (SPTBN2/3142R) followed by Goat anti-Mouse IgG-CF488 (Green). Nuclear counterstain is Reddot (Red)

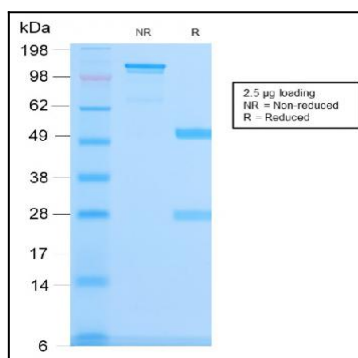


Fig. 4: SDS-PAGE Analysis Purified Spectrin beta III Recombinant Rabbit Monoclonal (SPTBN2/3142R). Confirmation of Purity and Integrity of Antibody.

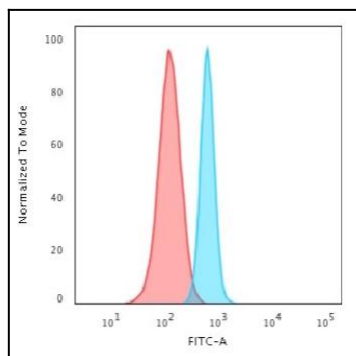


Fig. 5: Flow Cytometric Analysis of HeLa cells using Spectrin beta III Recombinant Rabbit Monoclonal (SPTBN2/3142R) followed by Goat anti-rabbit IgG-CF488 (Blue); Isotype Control (Red).