

36-3212: Anti-SREBP1 Monoclonal Antibody(Clone: SREBP1/1578)

Clonality :	Monoclonal
Clone Name :	SREBP1/1578
Application :	IHC
Reactivity :	Human
Gene :	SREBF1
Gene ID :	6720
Uniprot ID :	P36956
Alternative Name :	ADD 1; bHLHd1; Class D basic helix-loop-helix protein 1; Processed sterol regulatory element-binding protein 1; SREBF1; SREBP1c; SREBP-1; Sterol Regulatory Element Binding Transcription Factor 1 / Protein 1; Sterol regulatory element binding transcription factor 1; Sterol regulatory element-binding transcription factor 1
Isotype :	Mouse IgG1, kappa
Immunogen Information :	Recombinant full-length human SREBF1 protein

Description

The low density lipoprotein (LDL) receptor mediates the endocytic uptake of cholesterol-carrying lipoproteins, thereby controlling cholesterol levels in cells and plasma. Transcription of the LDL receptor gene is controlled by a ten base pair sequence in the 5' flanking region, designated sterol regulatory element 1 (SRE-1). When cellular sterol stores are depleted, the element is activated, the gene is transcribed and the cellular uptake of LDL increases. A set of SREbinding proteins (SREBPs) have been identified, including two basic helixloop-helix-leucine zipper (bHLH-zip) transcription factors, designated SREBP-1 and SREBP-2. SREBP-1 and SREBP-2 have been shown to have the same specificity for SRE-1 in vitro and to activate the transcription of reporter genes containing SRE-1 in the same way.

Product Info

Amount :	20 µg / 100 µg
Content :	200 µg/ml of Ab Purified from Bioreactor Concentrate by Protein A/G. Prepared in 10mM PBS with 0.05% BSA & 0.05% azide. Also available WITHOUT BSA & azide at 1.0mg/ml.
Storage condition :	Antibody with azide - store at 2 to 8°C. Antibody without azide - store at -20 to -80°C. Antibody is stable for 24 months. Non-hazardous.

Application Note

Immunohistochemistry (Formalin-fixed) (1-2ug/ml for 30 minutes at RT),(Staining of formalin-fixed tissues requires heating tissue sections in 10mM Tris with 1mM EDTA, pH 9.0, for 45 min at 95 °C followed by cooling at RT for 20 minutes),

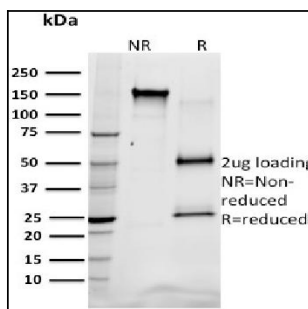


Fig. 1: SDS-PAGE Analysis Purified SREBP1 Mouse Monoclonal Antibody (SREBP1/1578). Confirmation of Integrity and Purity of Antibody.