

### 36-3217: Anti-STAT2 Monoclonal Antibody(Clone: STAT2/2650)

<b>Clonality :</b>	Monoclonal
<b>Clone Name :</b>	STAT2/2650
<b>Application :</b>	IHC
<b>Reactivity :</b>	Human
<b>Gene :</b>	STAT2
<b>Gene ID :</b>	6773
<b>Uniprot ID :</b>	P52630
<b>Alternative Name :</b>	Homo sapiens interferon alpha induced transcriptional activator; interferon alpha induced transcriptional activator (ISGF3); P113; signal transducer and activator of transcription 2 113kD (STAT113); Signal transducer and activator of transcription 2 (STAT2)
<b>Isotype :</b>	Mouse IgG1, kappa
<b>Immunogen Information :</b>	Recombinant full-length human STAT2 protein

#### Description

Membrane receptor signaling by various ligands, including interferons and growth hormones such as EGF, induces activation of JAK kinases which then leads to tyrosine phosphorylation of the various Stat transcription factors. Stat1 and Stat2 are induced by IFN- is activated by EGF, but not by IL-6. Highest expression of Stat4 is seen in testis and myeloid cells. IL-12 has been identified as an activator of Stat4. Stat5 has been shown to be activated by prolactin and by IL-3. Stat6 is involved in IL-4 activated signaling pathways.

#### Product Info

<b>Amount :</b>	20 µg / 100 µg
<b>Content :</b>	200 µg/ml of Ab Purified from Bioreactor Concentrate by Protein A/G. Prepared in 10mM PBS with 0.05% BSA & 0.05% azide. Also available WITHOUT BSA & azide at 1.0mg/ml.
<b>Storage condition :</b>	Antibody with azide - store at 2 to 8°C. Antibody without azide - store at -20 to -80°C. Antibody is stable for 24 months. Non-hazardous.

#### Application Note

Immunohistochemistry (Formalin-fixed) (1-2ug/ml for 30 min at RT)(Staining of formalin-fixed tissues requires heating tissue sections in 10mM Tris with 1mM EDTA, pH 9.0, for 45 min at 95°C followed by cooling at RT for 20 minutes);

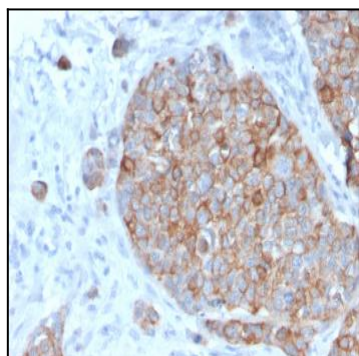


Fig. 1: Formalin-fixed, paraffin-embedded human Prostate Carcinoma stained with STAT2 Mouse Monoclonal Antibody (STAT2/2650).

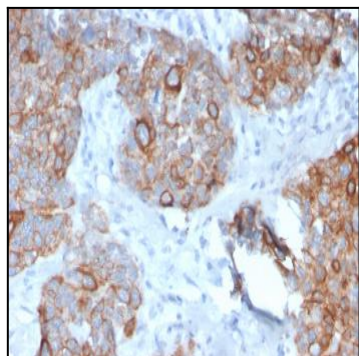


Fig. 2: Formalin-fixed, paraffin-embedded human Prostate Carcinoma stained with STAT2 Mouse Monoclonal Antibody (STAT2/2650).

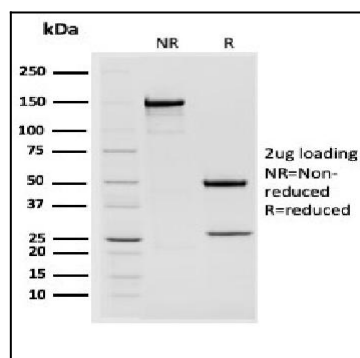


Fig. 3: SDS-PAGE Analysis Purified STAT2 Mouse Monoclonal Antibody (STAT2/2650). Confirmation of Purity and Integrity of Antibody.