

36-3225: Anti-Tal1 Monoclonal Antibody(Clone: TAL1/2707)

Clonality :	Monoclonal
Clone Name :	TAL1/2707
Application :	ELISA
Reactivity :	Human
Gene :	TAL1
Gene ID :	6886
Uniprot ID :	P17542
Alternative Name :	bHLHa17; Class A basic helix-loop-helix protein 17; OTTHUMP00000009563; OTTHUMP00000009564; SCL; STEM CELL LEUKEMIA HEMATOPOIETIC TRANSCRIPTION FACTOR; Stem cell protein; T cell acute lymphocytic leukemia 1; T cell acute lymphocytic leukemia 1 protein; T cell acute lymphocytic leukemia 1 protein; T cell leukemia/lymphoma 5 protein; T-cell acute lymphocytic leukemia protein 1; T-cell leukemia/lymphoma protein 5; Tal 1 product; TAL 1 protein; TAL bHLH transcription factor 1 erythroid differentiation factor; TAL-1
Isotype :	Mouse IgG2a, kappa
Immunogen Information :	Recombinant human full-length TAL1 protein

Description

Activation of TAL1 characterizes up to 60% of cases of human T cell acute lymphoblastic leukemia, making it the most frequent gain-of-function mutation observed in this disorder. TAL1 (also designated SCL) is a serine phosphoprotein and basic helix-loop-helix transcription factor known to regulate embryonic hematopoiesis. This transcription factor binds as a heterodimer with E2A and HEB/HTF4 to a nucleotide sequence motif termed the E-box. In addition, leukemogenesis is accelerated dramatically by transgenic co-expression of TAL1 and the catalytic subunit of casein kinase IIHLH transcription factors.

Product Info

Amount :	20 µg / 100 µg
Content :	200 µg/ml of Ab Purified from Bioreactor Concentrate by Protein A/G. Prepared in 10mM PBS with 0.05% BSA & 0.05% azide. Also available WITHOUT BSA at 1.0mg/ml.
Storage condition :	Antibody with azide - store at 2 to 8°C. Antibody is stable for 24 months. Non-hazardous.

Application Note

ELISA (For coating, order antibody without BSA);

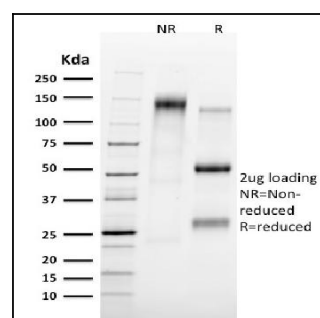


Fig. 1: SDS-PAGE Analysis Purified Tal1 Mouse Monoclonal Antibody (TAL1/2707). Confirmation of Integrity and Purity of Antibody.