

## 36-3232: Anti-pS2 / pNR-2 / TFF1 (Estrogen-Regulated Protein) Monoclonal Antibody(Clone: rTFF1/1091)

<b>Clonality :</b>	Monoclonal
<b>Clone Name :</b>	rTFF1/1091
<b>Application :</b>	IHC
<b>Reactivity :</b>	Human
<b>Gene :</b>	TFF1
<b>Gene ID :</b>	7031
<b>Uniprot ID :</b>	P04155
<b>Alternative Name :</b>	BCEI, Breast Cancer Estrogen Inducible Protein, Gastrointestinal Trefoil Protein, Gastrointestinal trefoil protein pS2, HP1A, HPS2, pNR2, TFF1, Trefoil Factor 1
<b>Isotype :</b>	Mouse IgG1, kappa
<b>Immunogen Information :</b>	Recombinant full-length human TFF1 protein

### Description

It recognizes a polypeptide of 6.5kDa, identified as pS2 estrogen-regulated protein. Its epitope is located in the c-terminus of human pS2 protein. pS2 is a trefoil peptide. Trefoil peptides are protease resistant molecules secreted throughout the gut that play a role in mucosal healing. These peptides contain three intra-chain disulfide bonds, forming the trefoil motif, or P-domain. pS2 is known to form dimers and this dimerization is thought to play a role in its protective and healing properties. About 60% of breast carcinomas are positive for pS2. Staining is cytoplasmic, often with localization to the Golgi apparatus. pS2 is shown to be localized in normal stomach mucosa, gastric fluid, goblet cells in the colon and small intestine, and in ulcerations of the gastrointestinal tract. Several studies have shown that pS2 is primarily expressed in estrogen receptor-positive breast tumors and it may define a subset of estrogen-dependent tumors that displays an increased likelihood of response to endocrine therapy.

### Product Info

<b>Amount :</b>	20 µg / 100 µg
<b>Content :</b>	200 µg/ml of Ab Purified from Bioreactor Concentrate by Protein A/G. Prepared in 10mM PBS with 0.05% BSA & 0.05% azide. Also available WITHOUT BSA & azide at 1.0mg/ml.
<b>Storage condition :</b>	Antibody with azide - store at 2 to 8°C. Antibody without azide - store at -20 to -80°C. Antibody is stable for 24 months. Non-hazardous.

### Application Note

Immunohistochemistry (Formalin-fixed. Not suitable for frozen tissues.) (1-2ug/ml for 30 minutes at RT)(Staining of formalin-fixed tissues requires heating tissue sections in 10mM Tris with 1mM EDTA, pH 9.0, for 45 min at 95&degC followed by cooling at RT for 20 minutes);

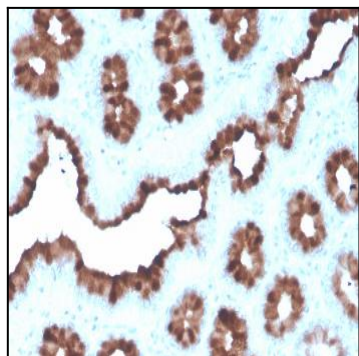


Fig. 1: Formalin-fixed, paraffin-embedded human Breast Carcinoma stained with TFF1/pS2 Mouse Monoclonal Antibody (rTFF1/1091).

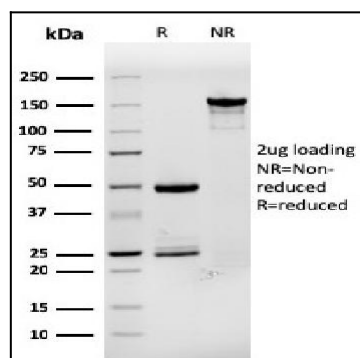


Fig. 2: SDS-PAGE Analysis Purified TFF1/ps2 Mouse Monoclonal Antibody (rTFF1/1091). Confirmation of Purity and Integrity of Antibody.