

### 36-3269: Anti-TLE1 (Synovial Sarcoma Marker) Monoclonal Antibody(Clone: TLE1/2946R)

<b>Clonality :</b>	Monoclonal
<b>Clone Name :</b>	TLE1/2946R
<b>Application :</b>	IHC
<b>Reactivity :</b>	Human
<b>Gene :</b>	TLE1
<b>Gene ID :</b>	7088
<b>Uniprot ID :</b>	Q04724
<b>Alternative Name :</b>	Enhancer of split groucho 1 (ESG1); Enhancer of split groucho-like protein 1; GRG1; TLE1; Transducin like enhancer of split 1; Transducin-like enhancer protein 1
<b>Isotype :</b>	Rabbit IgG
<b>Immunogen Information :</b>	Recombinant human TLE1 fragment (aa 175-338) (exact sequence is proprietary)

#### Description

Key players in the Notch pathway are the TLE genes, which are human homologs of the *Drosophila* groucho gene. Groucho is a transcriptional repressor that plays a key role in neurogenesis, segmentation and sex determination. Transducin-like enhancer protein1 (TLE1) is a protein that is encoded by the TLE1 gene and is involved in control of hematopoiesis, neuronal, and terminal epithelial differentiation. Positive immunohistochemical nuclear staining with anti-TLE-1 has been shown to be a useful addition to an IHC panel when differentiating synovial sarcoma from other soft tissue malignancies.

#### Product Info

<b>Amount :</b>	20 µg / 100 µg
<b>Content :</b>	200 µg/ml of Ab Purified from Bioreactor Concentrate by Protein A/G. Prepared in 10mM PBS with 0.05% BSA & 0.05% azide. Also available WITHOUT BSA & azide at 1.0mg/ml.
<b>Storage condition :</b>	Antibody with azide - store at 2 to 8°C. Antibody without azide - store at -20 to -80°C. Antibody is stable for 24 months. Non-hazardous.

#### Application Note

Immunohistochemistry (Formalin-fixed) (1-2µg/ml for 30 minutes at RT)(Staining of formalin-fixed tissues requires heating tissue sections in 10mM Tris with 1mM EDTA, pH 9.0, for 45 min at 95°C followed by cooling at RT for 20 minutes);

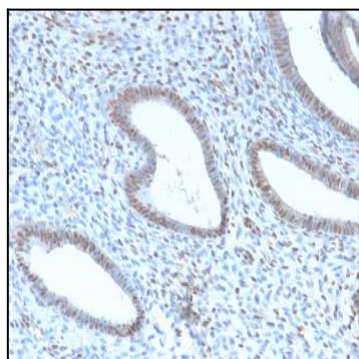


Fig. 1: Formalin-fixed, paraffin-embedded human Endometrial Carcinoma stained with TLE1 Rabbit Recombinant Monoclonal Antibody (TLE1/2946R).

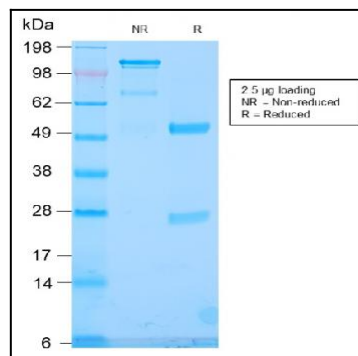


Fig. 2: SDS-PAGE Analysis Purified TLE1 Rabbit Recombinant Monoclonal Antibody (TLE1/2946R). Confirmation of Integrity and Purity of Antibody.