

## 36-3311: Anti-GRP94 / HSP90B1 (Endoplasmic Reticulum Marker) Monoclonal Antibody(Clone: HSP90B1/3168R)

<b>Clonality :</b>	Monoclonal
<b>Clone Name :</b>	HSP90B1/3168R
<b>Application :</b>	FACS,IHC
<b>Reactivity :</b>	Human, Rat, Mouse
<b>Gene :</b>	HSP90B1
<b>Gene ID :</b>	7184
<b>Uniprot ID :</b>	P14625
<b>Alternative Name :</b>	Glucose Regulated Protein 94; 94kDa glucose-regulated protein, Endoplasmin, Endothelial cell (HBMEC) glycoprotein (ECGP), Heat shock protein 90kDa beta member 1 (HSP90B1), Stress inducible tumor rejection antigen GP96, TRA1, Tumor rejection antigen-1 (gp96)
<b>Isotype :</b>	Rabbit IgG
<b>Immunogen Information :</b>	Recombinant full-length human HSP90B1 protein

### Description

Recognizes a protein of 94kDa, which is identified as the glucose-regulated protein 94 (grp94) and also tumor rejection antigen (gp96). Grp94 shows a high degree of sequence homology with the heat shock protein 90 (hsp90). This MAb is highly specific to grp94 and shows minimal cross-reaction with other members of the HSP90 family. Grp's are a class of proteins unresponsive to heat shock and are induced by glucose deprivation. Grp94 has been briefly studied as a prognostic factor in breast cancer.

### Product Info

<b>Amount :</b>	20 µg / 100 µg
<b>Content :</b>	200 µg/ml of Ab Purified from Bioreactor Concentrate by Protein A/G. Prepared in 10mM PBS with 0.05% BSA & 0.05% azide. Also available WITHOUT BSA at 1.0mg/ml.
<b>Storage condition :</b>	Antibody with azide - store at 2 to 8°C. Antibody without azide - store at -20 to -80°C. Antibody is stable for 24 months. Non-hazardous.

### Application Note

Flow Cytometry (1-2ug/million cells);Immunohistochemistry (Formalin-fixed) (1-2ug/ml for 30 minutes at RT)(Staining of formalin-fixed tissues requires heating tissue sections in 10mM Tris with 1mM EDTA, pH 9.0, for 45 min at 95&degC followed by cooling at RT for 20 minutes);

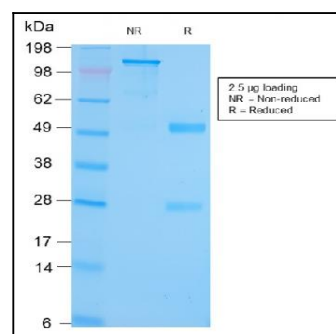


Fig. 1: SDS-PAGE Analysis Purified GRP94 Recombinant Rabbit Monoclonal (HSP90B1/3168R). Confirmation of Purity and Integrity of Antibody.

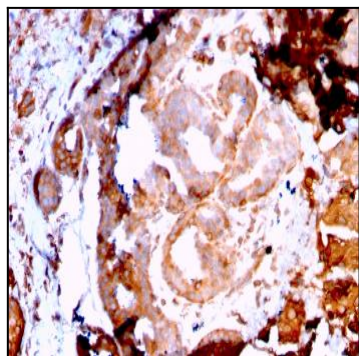


Fig. 2: Formalin-fixed, paraffin-embedded human Breast Carcinoma stained with GRP94 Recombinant Rabbit Monoclonal Antibody (HSP90B1/3168R).

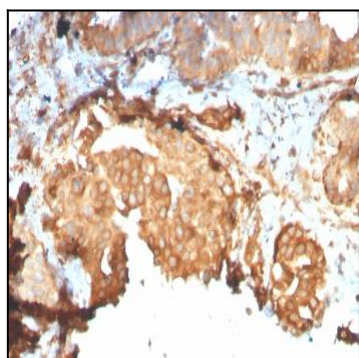


Fig. 3: Formalin-fixed, paraffin-embedded human Breast Carcinoma stained with GRP94 Recombinant Rabbit Monoclonal Antibody (HSP90B1/3168R).

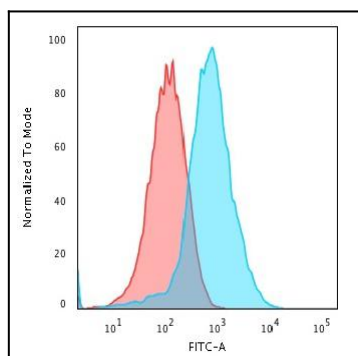


Fig. 4: Flow Cytometric Analysis of PFA-fixed HePG2 cells using GRP94 Recombinant Rabbit Monoclonal Antibody (HSP90B1/3168R) followed by Goat anti-Rat- IgG-CF488 (Blue); Isotype Control (Red).