

36-3357: Anti-Villin (GI-Mucosal & Urogenital Brush Border Marker) Monoclonal Antibody(Clone: VIL1/1314 + VIL1/2376)

Clonality :	Monoclonal
Clone Name :	VIL1/1314 + VIL1/2376
Application :	IHC
Reactivity :	Human
Gene :	VIL1
Gene ID :	7429
Uniprot ID :	P09327
Alternative Name :	VIL1; Villin-1; Villin1
Isotype :	Mouse IgG1, kappa + Mouse IgG1, kappa
Immunogen Information :	A recombinant fragment (around aa179-311) of human Villin protein (exact sequence is proprietary)

Description

Recognizes a protein of 95kDa, which is identified as villin. It is a major constituent in the microvilli, which compose the brush border of epithelial cells forming absorptive surfaces of the intestinal and renal proximal tubular epithelia. Anti-Villin labels the brush border area in the gastrointestinal mucosal epithelium and urogenital tract. Among neoplasms, villin is predominantly expressed in tumors of colorectal origin. Antibody to villin is useful in identifying malignant cells from primary and metastatic colorectal carcinomas. This antibody also labels Merkel cells of the skin.

Product Info

Amount :	20 µg / 100 µg
Content :	200 µg/ml of Ab Purified from Bioreactor Concentrate by Protein A/G. Prepared in 10mM PBS with 0.05% BSA & 0.05% azide. Also available WITHOUT BSA & azide at 1.0mg/ml.
Storage condition :	Antibody with azide - store at 2 to 8°C. Antibody without azide - store at -20 to -80°C. Antibody is stable for 24 months. Non-hazardous.

Application Note

Immunohistochemistry (Formalin-fixed) (1-2ug/ml for 30 minutes at RT)(Staining of formalin-fixed tissues requires heating tissue sections in 10mM Tris with 1mM EDTA, pH 9.0, for 45 min at 95°C followed by cooling at RT for 20 minutes);

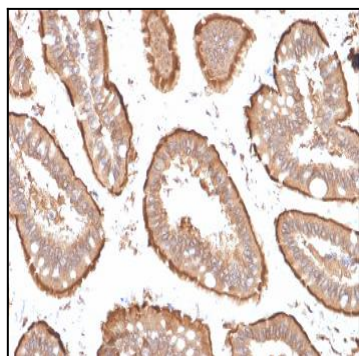


Fig. 1: Formalin-fixed, paraffin-embedded human Small Intestine stained with Villin Mouse Monoclonal Antibody (VIL1/1314 + VIL1/2376).

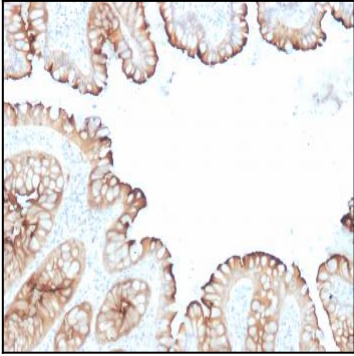


Fig. 2: Formalin-fixed, paraffin-embedded human Colon Carcinoma stained with Villin Mouse Monoclonal Antibody (VIL1/1314 + VIL1/2376).