

36-3385: Anti-Renal Cell Carcinoma (Carbonic Anhydrase IX) Monoclonal Antibody(Clone: CA9/2993R)

Clonality :	Monoclonal
Clone Name :	CA9/2993R
Application :	IHC
Reactivity :	Human
Gene :	CA9
Gene ID :	768
Uniprot ID :	Q16790
Alternative Name :	CA-IX, CA9, CAIX, Carbonate dehydratase IX, Carbonic anhydrase 9, Carbonic anhydrase IX, Carbonic dehydratase, G250, Membrane antigen MN, P54/58N, pMW1, RCC-associated antigen G250, Renal cell carcinoma-associated antigen G250
Isotype :	Rabbit IgG
Immunogen Information :	Recombinant full-length human CA9 protein

Description

Recognizes a glycoprotein of ~200kDa, identified as carbonic anhydrase IX (CAIX/gp200). Its epitope resides in the carbohydrate domain of gp200. It shows no significant cross-reactivity with other carbohydrate determinants, such as the Lewis blood group antigens, epithelial membrane antigen, HMFG, and AB blood group antigens. In normal kidney, gp200 is localized along the brush border of the pars convoluta and pars recta segments of the proximal tubule, as well as focally along the luminal surface of Bowman's capsule adjoining the outgoing proximal tubule. Reportedly, gp200 is expressed by 93% of primary and 84% of metastatic renal cell carcinomas. This MAb may be useful in the investigations of carcinomas of proximal nephrogenic differentiation especially those showing tubular differentiation.

Product Info

Amount :	20 µg / 100 µg
Content :	200 µg/ml of Ab Purified from Bioreactor Concentrate by Protein A/G. Prepared in 10mM PBS with 0.05% BSA & 0.05% azide. Also available WITHOUT BSA & azide at 1.0mg/ml.
Storage condition :	Antibody with azide - store at 2 to 8°C. Antibody without azide - store at -20 to -80°C. Antibody is stable for 24 months. Non-hazardous.

Application Note

Immunohistochemistry (Formalin-fixed) (1-2ug/ml for 30 minutes at RT)(Staining of formalin-fixed tissues requires heating tissue sections in 10mM Tris with 1mM EDTA, pH 9.0, for 45 min at 95°C followed by cooling at RT for 20 minutes);

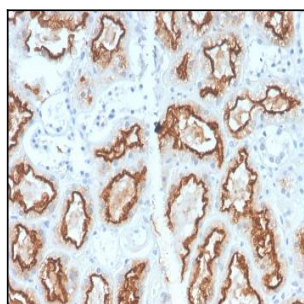


Fig. 1: Formalin-fixed, paraffin-embedded human Renal Cell Carcinoma stained with RCC Rabbit Recombinant Monoclonal Antibody (CA9/2993R).

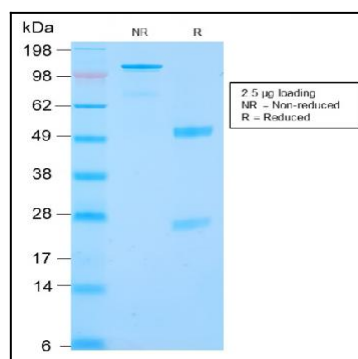


Fig. 2: SDS-PAGE Analysis Purified RCC Rabbit Recombinant Monoclonal Antibody (CA9/2993R). Confirmation of Integrity and Purity of Antibody.