

36-3390: Anti-PAX8 (Renal Cell Marker) Monoclonal Antibody(Clone: PAX8/2774R)

Clonality :	Monoclonal
Clone Name :	PAX8/2774R
Application :	IHC
Reactivity :	Human
Gene :	PAX8
Gene ID :	7849
Uniprot ID :	Q06710
Alternative Name :	Paired box 8; Paired box gene 8; paired box homeotic gene 8; Paired box protein Pax-8; Paired domain gene 8; PAX8
Isotype :	Rabbit IgG
Immunogen Information :	Recombinant fragment (around aa 60-261) of human PAX8 protein (exact sequence is proprietary)

Description

Recognizes a protein of 62kDa, identified as PAX8. It is a member of the paired box (PAX) family of transcription factors. This nuclear protein is involved in thyroid follicular cell development and expression of thyroid-specific genes. Mutations in this gene have been associated with thyroid dysgenesis, thyroid follicular carcinomas, and atypical thyroid adenomas. PAX-8 is expressed in the thyroid (and associated carcinomas), non-ciliated mucosal cells of the fallopian tubes, and simple ovarian inclusion cysts, but not normal ovarian surface epithelial cells. PAX-8 is expressed in a high percentage of ovarian serous, endometrioid, and clear cell carcinomas, but only rarely in primary ovarian mucinous adenocarcinomas. PAX-8 expression is reported in renal tubules as well as renal cell carcinoma, nephroblastoma, and seminoma. PAX-8 antibody may be used as an additional immunohistochemical marker for renal epithelial tumors.

Product Info

Amount :	20 µg / 100 µg
Content :	200 µg/ml of Ab Purified from Bioreactor Concentrate by Protein A/G. Prepared in 10mM PBS with 0.05% BSA & 0.05% azide. Also available WITHOUT BSA & azide at 1.0mg/ml.
Storage condition :	Antibody with azide - store at 2 to 8°C. Antibody without azide - store at -20 to -80°C. Antibody is stable for 24 months. Non-hazardous.

Application Note

Immunohistochemistry (Formalin-fixed) (1-2ug/ml for 30 minutes at RT),(Staining of formalin-fixed tissues requires heating tissue sections in 10mM Tris buffer with 1mM EDTA, pH 9.0, for 45 min at 95°C followed by cooling at RT for 20 minutes),

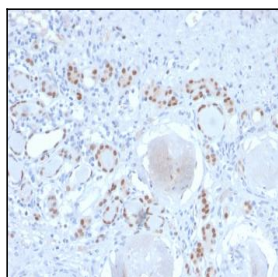


Fig. 1: Formalin-fixed, paraffin-embedded human Kidney stained with PAX8 Recombinant Rabbit Monoclonal Antibody (PAX8/2774R).

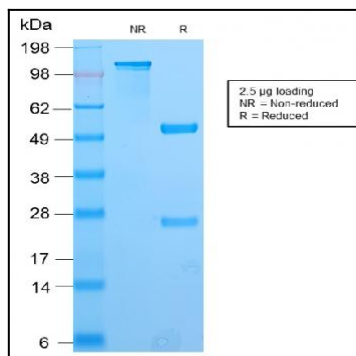


Fig. 2: SDS-PAGE Analysis Purified PAX8 Recombinant Rabbit Monoclonal Antibody (PAX8/2774R). Confirmation of Purity and Integrity of Antibody.

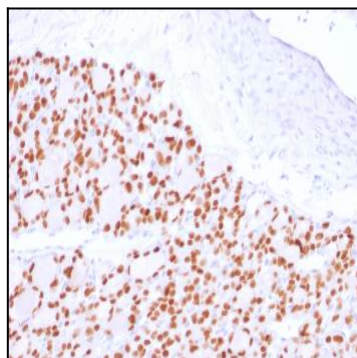


Fig. 3: Formalin-fixed, paraffin-embedded human Thyroid stained with PAX8 Recombinant Rabbit Monoclonal Antibody (PAX8/2774R).