

36-3403: Anti-ASRGL1 (Asparaginase Like 1) Monoclonal Antibody(Clone: CRASH/1289)

Clonality :	Monoclonal
Clone Name :	CRASH/1289
Application :	IHC
Reactivity :	Human
Gene :	ASRGL1
Gene ID :	80150
Uniprot ID :	Q7L266
Alternative Name :	ALP1; ASGL1; Asparaginase like 1; ASRGL1; beta-aspartyl-peptidase; CRASH; isoaspartyl dipeptidase; isoaspartyl peptidase/L-asparaginase; L asparaginase; L asparagine amidohydrolase
Isotype :	Mouse IgG1, kappa
Immunogen Information :	Recombinant human ASRGL1 fragment

Description

ASRGL1 (Asparaginase-like protein 1), also known as CRASH, is a 308 amino acid protein belonging to the Ntn-hydrolase family. Asparaginases utilize asparagine as a substrate to produce aspartic acid and ammonia. ASRGL1 has been identified as a autoantigenic protein that is present in the mid-piece of sperm after obstruction of the male reproductive tract. ASRGL1 is expressed highly in testis, but is also expressed in brain, kidney and gastrointestinal tissues. High levels of ASRGL1 have also been identified in ovarian, uterine and mammary tumors in comparison with normal tissues of the same origin.

Product Info

Amount :	20 µg / 100 µg
Content :	200 µg/ml of Ab Purified from Bioreactor Concentrate by Protein A/G. Prepared in 10mM PBS with 0.05% BSA & 0.05% azide. Also available WITHOUT BSA & azide at 1.0mg/ml.
Storage condition :	Antibody with azide - store at 2 to 8°C. Antibody without azide - store at -20 to -80°C. Antibody is stable for 24 months. Non-hazardous.

Application Note

Immunohistochemistry (Formalin-fixed) (1-2ug/ml for 30 minutes at RT)(Staining of formalin-fixed tissues is enhanced by heating tissue sections in 10mM Tris with 1mM EDTA, pH 9.0 for 45 min at 95°C followed by cooling at RT for 20 minutes)

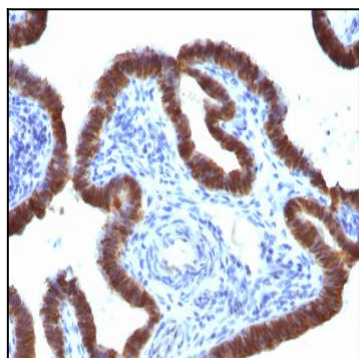


Fig. 1: Formalin-fixed, paraffin-embedded human Fallopian Tube stained with ASRGL1 Mouse Monoclonal Antibody (CRASH/1289).

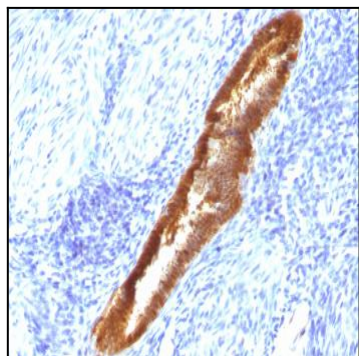


Fig. 2: Formalin-fixed, paraffin-embedded human Endometrium stained with ASRGL1 Mouse Monoclonal Antibody (CRASH/1289).



Fig. 3: Formalin-fixed, paraffin-embedded human Uterus stained with ASRGL1 Mouse Monoclonal Antibody (CRASH/1289).

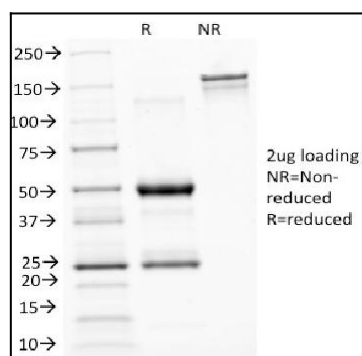


Fig. 4: SDS-PAGE Analysis Purified ASRGL1 Mouse Monoclonal Antibody (CRASH/1289). Confirmation of Purity and Integrity of Antibody.