

36-3413: Anti-Calpain 1 Monoclonal Antibody(Clone: CAPN1/1530)

Clonality :	Monoclonal
Clone Name :	CAPN1/1530
Application :	ELISA,IHC
Reactivity :	Human
Gene :	CAPN1
Gene ID :	823
Uniprot ID :	P07384
Alternative Name :	Calcium dependent protease small subunit 1; Calcium-activated neutral proteinase 1; Calpain 1 large subunit; Calpain mu-type; Calpain regulatory subunit; Calpain small subunit 1; Calpain, large polypeptide L1; Calpain-1 catalytic subunit; CANP small subunit; CANP1; CANPL1; CAPN1; Cell proliferation-inducing gene 30 protein; Micromolar-calpain; Mu Calpain
Isotype :	Mouse IgG1, kappa
Immunogen Information :	Recombinant full-length human CAPN1 protein

Description

Calpain 1 is an intracellular calcium-dependent protease that cleaves cytoskeletal and sub-membranous proteins. Calpains are non-lysosomal, calcium-activated intracellular cysteine proteases. Calpains mediate specific Ca^{2+} -dependent processes including cell fusion, mitosis and meiosis. Calpains are heterodimers of a small regulatory subunit and one of three large catalytic subunits, designated Calpain 1, Calpain 2 and Calpain p94. Calpastatin regulates Calpain by inhibiting both the proteolytic activity of Calpain and its binding to membranes. Calpastatin exists in two types, tissue type and erythrocyte type, resulting from both alternative splicing and proteolytic processing. Calpain 1 co-localizes with human leukocyte antigen-DR (HLA-DR) on activated microglia in the aging brain. Calpain influences the process of spermatogenesis and the events preceding fertilization, such as the acrosome reaction.

Product Info

Amount :	20 µg / 100 µg
Content :	200 µg/ml of Ab Purified from Bioreactor Concentrate by Protein A/G. Prepared in 10mM PBS with 0.05% BSA & 0.05% azide. Also available WITHOUT BSA & azide at 1.0mg/ml.
Storage condition :	Antibody with azide - store at 2 to 8°C. Antibody without azide - store at -20 to -80°C. Antibody is stable for 24 months. Non-hazardous.

Application Note

ELISA (Use Ab at 2-4ug/ml for coating) (Order Ab without BSA); Immunohistochemistry (Formalin-fixed) (1-2ug/ml for 30 minutes at RT)(Staining of formalin-fixed tissues requires heating tissue sections in 10mM Tris with 1mM EDTA, pH 9.0, for 45 min at 95°C followed by cooling at RT for 20 minutes);

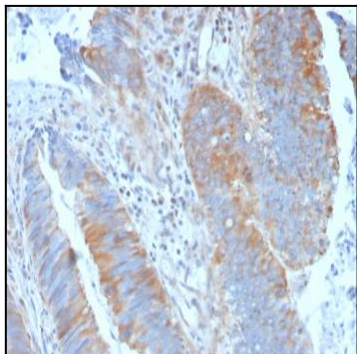


Fig. 1: Formalin-fixed, paraffin-embedded human Colon Carcinoma stained with Calpain 1 Mouse Monoclonal Antibody (CAPN1/1530).

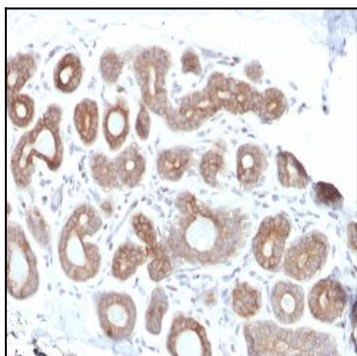


Fig. 2: Formalin-fixed, paraffin-embedded human Breast Carcinoma stained with Calpain 1 Mouse Monoclonal Antibody (CAPN1/1530).

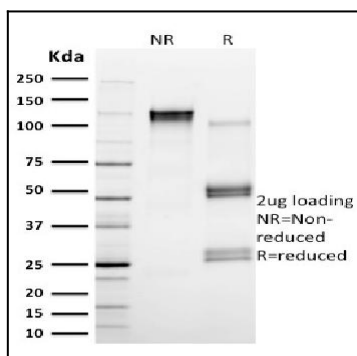


Fig. 3: SDS-PAGE Analysis Purified Calpain 1 Mouse Monoclonal Antibody (CAPN1/1530). Confirmation of Purity and Integrity of Antibody.