

## 36-3420: Anti-MAML2 (Mastermind Like Transcriptional Coactivator 2) Monoclonal Antibody(Clone: MAML2/1302)

<b>Clonality :</b>	Monoclonal
<b>Clone Name :</b>	MAML2/1302
<b>Application :</b>	FACS,IF,WB,IHC
<b>Reactivity :</b>	Human
<b>Gene :</b>	MAML2
<b>Gene ID :</b>	84441
<b>Uniprot ID :</b>	Q8IZL2
<b>Alternative Name :</b>	Mam-2; MAML2; Mastermind-like protein 2
<b>Isotype :</b>	Mouse IgG2a, kappa
<b>Immunogen Information :</b>	Recombinant human MAML2 fragment

### Description

MAML2 (mastermind-like protein 2), also known as MAM2, MAM3 or MLLMAML2, is a nuclear speckle protein that acts as a transcriptional co-activator for Notch receptors. The Notch signaling pathway influences cell fate by regulating the ability of precursor cells to properly respond to developmental signals. MAML2 is a member of the mastermind-like family of proteins that are human homologs of the *Drosophila melanogaster* mastermind protein. Through its N-terminal region, MAML2 interacts with the ankyrin repeats of the Notch proteins Notch 1, Notch 2, Notch 3 and Notch 4. This interaction leads to formation of a DNA-binding complex with the Notch proteins and RBP-J a complex that can then induce HES1 gene expression. While the N-terminal domain of MAML2 is essential for proper Notch binding, the C-terminal domain of MAML2 is essential for transcriptional activation. A chromosomal aberration involving the gene encoding MAML2 is implicated in mucoepidermoid carcinomas, clear cell hidradenomas and benign Warthin tumors.

### Product Info

<b>Amount :</b>	20 µg / 100 µg
<b>Content :</b>	200 µg/ml of Ab Purified from Bioreactor Concentrate by Protein A/G. Prepared in 10mM PBS with 0.05% BSA & 0.05% azide. Also available WITHOUT BSA & azide at 1.0mg/ml.
<b>Storage condition :</b>	Antibody with azide - store at 2 to 8°C. Antibody without azide - store at -20 to -80°C. Antibody is stable for 24 months. Non-hazardous.

### Application Note

Flow Cytometry (1-2ug/million cells); Immunofluorescence (1-2ug/ml); Western Blot (1-2ug/ml); Immunohistochemistry (Formalin-fixed) (1-2ug/ml for 30 minutes at RT)(Staining of formalin-fixed tissues is enhanced by heating tissue sections in 10mM Tris with 1mM EDTA, pH 9.0 for 45 min at 95°C followed by cooling at RT for 20 minutes)

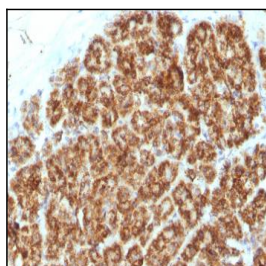


Fig. 1: Formalin-fixed, paraffin-embedded human Pancreas stained with MAML2 Monoclonal Antibody (MAML2/1302).

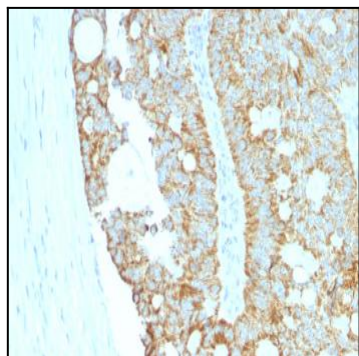


Fig. 2: Formalin-fixed, paraffin-embedded human Colon Carcinoma stained with MAML2 Monoclonal Antibody (MAML2/1302).

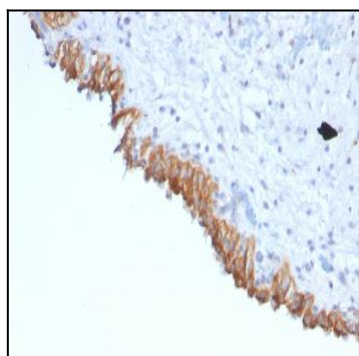


Fig. 3: Formalin-fixed, paraffin-embedded human Bladder Carcinoma stained with MAML2 Monoclonal Antibody (MAML2/1302).

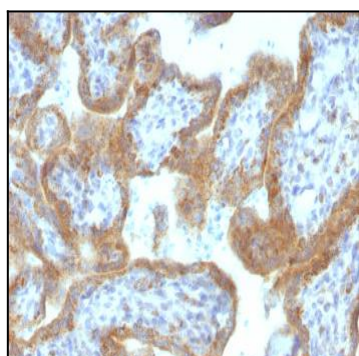


Fig. 4: Formalin-fixed, paraffin-embedded human Placenta stained with MAML2 Monoclonal Antibody (MAML2/1302).

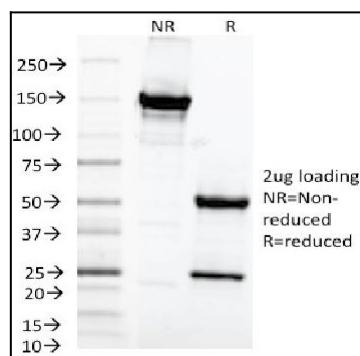


Fig. 5: SDS-PAGE Analysis Purified MAML2 Monoclonal Antibody (MAML2/1302). Confirmation of Purity and Integrity of Antibody.