

36-3444: Anti-Cyclin B1 (G2- & M-phase Cyclin) Monoclonal Antibody(Clone: CCNB1/2978R)(Discontinued)

| | |
|--------------------------------|---|
| Clonality : | Monoclonal |
| Clone Name : | CCNB1/2978R |
| Application : | ELISA |
| Reactivity : | Human |
| Gene : | CCNB1 |
| Gene ID : | 891 |
| Uniprot ID : | P14635 |
| Alternative Name : | CCNB, CCNB1, CCNB1_HUMAN, G2 Mitotic Specific Cyclin B1 |
| Isotype : | Rabbit IgG |
| Immunogen Information : | Recombinant full-length human CCNB1 protein |

Description

It recognizes a protein of 55-62kDa, identified as cyclin B1. In mammals, cyclin B associates with inactive p34cdc2, which facilitates phosphorylation of p34cdc2 at aa 14Thr and 15Tyr. This maintains the inactive state until the end of G2-phase. The inactive cyclin B-p34cdc2 complex continues to accumulate in the cytoplasm until the completion of DNA synthesis, when Cdc25, a specific protein phosphatase, dephosphorylates aa 14Thr and 15Tyr of p34cdc2 rendering the complex active at the G2/M boundary. This mitotic kinase complex remains active until the metaphase/anaphase transition when cyclin B is degraded. This degradation process is ubiquitin-dependent and is necessary for the cell to exit mitosis. So, cyclin B-p34cdc2 plays a critical role in G2 to M transition.

Product Info

| | |
|----------------------------|---|
| Amount : | 20 µg / 100 µg |
| Content : | 200 µg/ml of Ab Purified from Bioreactor Concentrate by Protein A/G. Prepared in 10mM PBS with 0.05% BSA & 0.05% azide. Also available WITHOUT BSA & azide at 1.0mg/ml. |
| Storage condition : | Antibody with azide - store at 2 to 8°C. Antibody without azide - store at -20 to -80°C. Antibody is stable for 24 months. Non-hazardous. |

Application Note

ELISA (For coating, order Ab without BSA); Optimal dilution for a specific application should be determined.

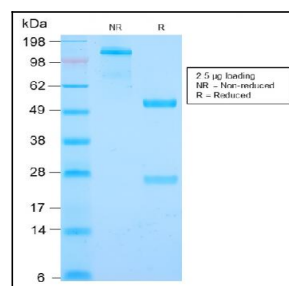


Fig. 1: SDS-PAGE Analysis Purified Cyclin B1 Rabbit Recombinant Monoclonal Antibody (CCNB1/2978R). Confirmation of Integrity and Purity of Antibody.