

## 36-3458: Anti-PDZ and LIM Domain 1 Monoclonal Antibody(Clone: CPTC-PDLIM1-1)

<b>Clonality :</b>	Monoclonal
<b>Clone Name :</b>	CPTC-PDLIM1-1
<b>Application :</b>	WB,IHC
<b>Reactivity :</b>	Human
<b>Gene :</b>	PDLIM1
<b>Gene ID :</b>	9124
<b>Uniprot ID :</b>	O00151
<b>Alternative Name :</b>	C terminal LIM domain protein 1; carboxy terminal LIM domain protein 1; CLIM1; CLP36; Elfin; Enigma antibody; Enigma homolog antibody; hCLIM1; PDLIM1; PDZ and LIM domain 1
<b>Isotype :</b>	Mouse IgG1, kappa
<b>Immunogen Information :</b>	Recombinant human full-length PDLIM1 protein

### Description

CLP36, also known as PDLIM1, CLIM1 or Elfin, is a 329 amino acid cytoplasmic protein that associates with actin stress fibers at the cytoskeleton. Expressed at high levels in skeletal muscle and heart and at lower levels in colon, small intestine, spleen, lung, placenta, kidney, liver, thymus and pancreas, CLP36 functions as a cytoskeletal protein that is thought to act as an adaptor, bringing target proteins to the cytoskeleton. Specifically, CLP36 interacts with Clik1 (-actinin-1, thereby facilitating the association of Clik1 with actin stress fibers. CLP36 contains one PDZ domain and one LIM zinc-binding domain through which it conveys its protein-protein binding capabilities. Human CLP36 shares 88% sequence similarity with its rat counterpart, suggesting a conserved function between species.

### Product Info

<b>Amount :</b>	20 µg / 100 µg
<b>Content :</b>	200 µg/ml of Ab Purified from Bioreactor Concentrate by Protein A/G. Prepared in 10mM PBS with 0.05% BSA & 0.05% azide. Also available WITHOUT BSA & azide at 1.0mg/ml.
<b>Storage condition :</b>	Antibody with azide - store at 2 to 8°C. Antibody without azide - store at -20 to -80°C. Antibody is stable for 24 months. Non-hazardous.

### Application Note

Western Blot (1-2ug/ml); Immunohistochemistry (Formalin-fixed) (1-2ug/ml for 30 min at RT)(Staining of formalin-fixed tissues requires heating tissue sections in 10mM Tris with 1mM EDTA, pH 9.0, for 45 min at 95°C followed by cooling at RT for 20 minutes);

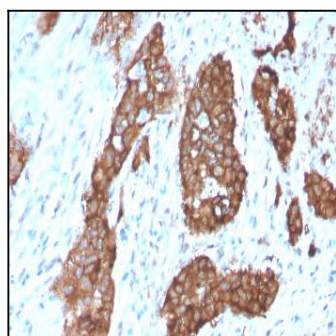


Fig. 1: Formalin-fixed, paraffin-embedded human Breast Carcinoma stained with PDZ and LIM Domain 1 Mouse Monoclonal Antibody (PDLIM-1).

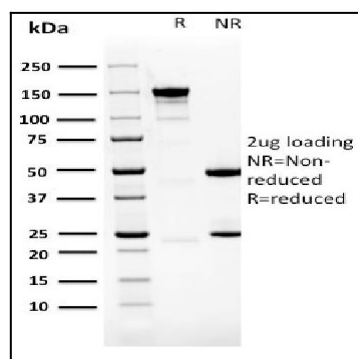


Fig. 2: SDS-PAGE Analysis Purified PDZ and LIM Domain 1 Mouse Monoclonal Antibody (PDLIM-1). Confirmation of Purity and Integrity of Antibody