

36-3467: Anti-CD3e (T-Cell Marker) Monoclonal Antibody(Clone: PC3/188A)

Clonality :	Monoclonal
Clone Name :	PC3/188A
Application :	FACS,IF,WB
Reactivity :	Human, Rat
Gene :	CD3E
Gene ID :	916
Uniprot ID :	P07766
Alternative Name :	CD 3E, CD3 epsilon, CD3 TCR complex, CD3E, CD3e antigen epsilon polypeptide (TiT3 complex), T cell antigen receptor complex epsilon subunit of T3, T-cell surface antigen T3/Leu-4 epsilon chain, T-cell surface glycoprotein CD3 epsilon chain, T3E, TCRE, TiT3 complex
Isotype :	Mouse IgG1
Immunogen Information :	A synthetic peptide corresponding to amino acids 156-168 of the cytoplasmic domain of human CD3-ε chain

Description

Recognizes the epsilon-chain of CD3, which consists of five different polypeptide chains (designated as gamma, delta, epsilon, zeta, and eta) with MW ranging from 16-28kDa. The CD3 complex is closely associated at the lymphocyte cell surface with the T cell antigen receptor (TCR). Reportedly, CD3 complex is involved in signal transduction to the T cell interior following antigen recognition. The CD3 antigen is first detectable in early thymocytes and probably represents one of the earliest signs of commitment to the T cell lineage. In cortical thymocytes, CD3 is predominantly intra-cytoplasmic. However, in medullary thymocytes, it appears on the T cell surface. CD3 antigen is a highly specific marker for T cells, and is present in majority of T cell neoplasms.

Product Info

Amount :	20 µg / 100 µg
Content :	200 µg/ml of Ab Purified from Bioreactor Concentrate by Protein A/G. Prepared in 10mM PBS with 0.05% BSA & 0.05% azide. Also available WITHOUT BSA & azide at 1.0mg/ml.
Storage condition :	Antibody with azide - store at 2 to 8°C. Antibody without azide - store at -20 to -80°C. Antibody is stable for 24 months. Non-hazardous.

Application Note

Flow Cytometry (0.5-1ug/million cells); ,Immunofluorescence (1-2ug/ml); ,Western Blotting (1-2ug/ml for 60 minutes at RT);,

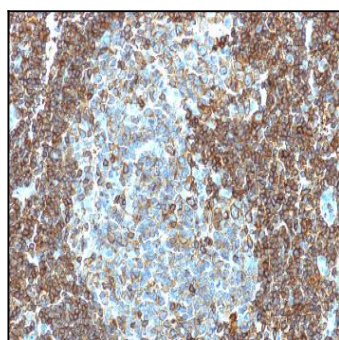


Fig. 1: Formalin-fixed, paraffin-embedded human Tonsil stained with CD3e Mouse Monoclonal Antibody (PC3/188A).

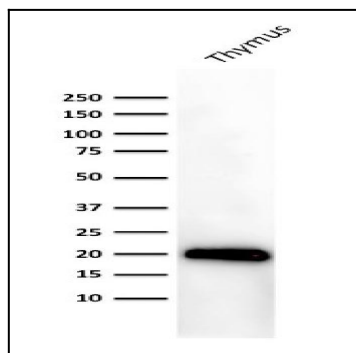


Fig. 2: Western Blot Analysis of human Thymus lysate using Purified CD3e Mouse Monoclonal Antibody (PC3/188A).

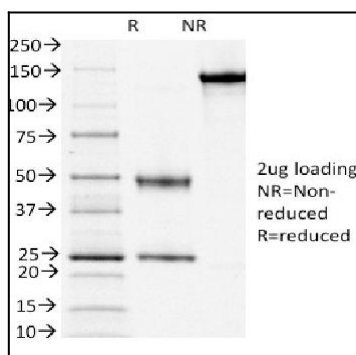


Fig. 3: SDS-PAGE Analysis Purified CD3e Mouse Monoclonal Antibody (PC3/188A). Confirmation of Integrity and Purity of Antibody.

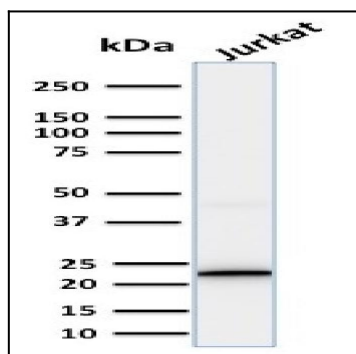


Fig. 4: Western Blot Analysis of human Jurkat cell lysate using CD3e Mouse Monoclonal Antibody (PC3/188A).