

36-3476: Anti-CD3e (T-Cell Marker) Monoclonal Antibody(Clone: B-B12)

Clonality :	Monoclonal
Clone Name :	B-B12
Application :	FACS,IF
Reactivity :	Human
Gene :	CD3E
Gene ID :	916
Uniprot ID :	P07766
Alternative Name :	CD3E, CD3 epsilon, CD3 TCR complex, CD3E, CD3e antigen epsilon polypeptide (TiT3 complex), T cell antigen receptor complex epsilon subunit of T3, T-cell surface antigen T3/Leu-4 epsilon chain, T-cell surface glycoprotein CD3 epsilon chain, T3E, TCRE, TiT3 complex
Isotype :	Mouse IgG1, kappa
Immunogen Information :	Human T cell leukemia cells

Description

Recognizes the epsilon-chain of CD3, which consists of five different polypeptide chains (designated as gamma, delta, epsilon, zeta, and eta) with MW ranging from 16-28kDa. CD3 is expressed, typically at high levels, on peripheral T cells and majority of T cell neoplasms. Thymocytes express CD3 at different level on the cell surface in the course of differentiation and, in cortical thymus, CD3 is predominantly Intracytoplasmic. The CD3 complex is closely associated at the lymphocyte cell surface with T cell antigen receptor (TCR) and is involved in transducing antigen-recognition signals into cytoplasm of T cells and in regulating the cell surface expression of the TCR complex.

Product Info

Amount :	20 µg / 100 µg
Content :	200 µg/ml of Ab Purified from rabbit anti-serum by Protein A. Prepared in 10mM PBS with 0.05% BSA & 0.05% azide. Also available WITHOUT BSA at 1.0mg/ml.
Storage condition :	Antibody with azide - store at 2 to 8°C. Antibody without azide - store at -20 to -80°C. Antibody is stable for 24 months. Non-hazardous.

Application Note

Flow Cytometry (1-2ug/million cells); ,Immunofluorescence (1-2ug/ml); ,

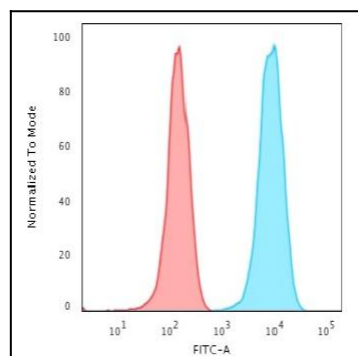


Fig. 1: Flow Cytometric Analysis of Jurkat cells. CD3e Mouse Monoclonal Antibody (B-B12) followed by Goat anti-Mouse IgG-CF488 (Blue); Isotype Control (Red).

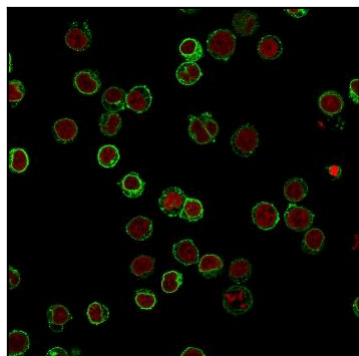


Fig. 2: Immunofluorescence Analysis of Jurkat cells labeling CD3e with CD3e Mouse Monoclonal Antibody (B-B12) followed by Goat anti-Mouse IgG-CF488 (Green). The nuclear counterstain is Reddot (Red).

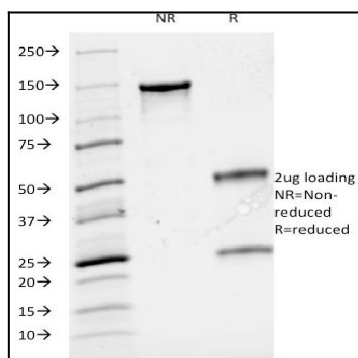


Fig. 3: SDS-PAGE Analysis Purified CD3e Mouse Monoclonal Antibody (B-B12). Confirmation of Integrity and Purity of Antibody.