

36-3478: Anti-CD3e (T-Cell Marker) Monoclonal Antibody(Clone: RIV9)

Clonality :	Monoclonal
Clone Name :	RIV9
Application :	Functional Assay,FACS,IF
Reactivity :	Human, Mouse, Rat
Gene :	CD3E
Gene ID :	916
Uniprot ID :	P07766
Alternative Name :	CD3E, CD3 epsilon, CD3 TCR complex, CD3E, CD3e antigen epsilon polypeptide (TiT3 complex), T cell antigen receptor complex epsilon subunit of T3, T-cell surface antigen T3/Leu-4 epsilon chain, T-cell surface glycoprotein CD3 epsilon chain, T3E, TCRe, TiT3 complex
Isotype :	Mouse IgG3, kappa
Immunogen Information :	Human peripheral lymphocytes

Description

Recognizes the epsilon-chain of CD3, which consists of five different polypeptide chains (designated as gamma, delta, epsilon, zeta, and eta) with MW ranging from 16-28kDa. It is found on all mature T-lymphocytes, NK, T-cells, and some thymocytes. CD3, also known as T3, is a member of the immunoglobulin superfamily that plays a role in antigen recognition, signal transduction, and T cell activation. It is expressed, typically at high levels, on peripheral T cells and majority of T cell neoplasms. Thymocytes express CD3 at different level on the cell surface in the course of differentiation and, in cortical thymus, CD3 is predominantly Intracytoplasmic. This MAb is particularly useful for induction of T cell activation in vitro and in vivo due to its unusual IgG3 isotype.

Product Info

Amount :	20 µg / 100 µg
Content :	200 µg/ml of Ab Purified from rabbit anti-serum by Protein A. Prepared in 10mM PBS with 0.05% BSA & 0.05% azide. Also available WITHOUT BSA at 1.0mg/ml.
Storage condition :	Antibody with azide - store at 2 to 8°C. Antibody without azide - store at -20 to -80°C. Antibody is stable for 24 months. Non-hazardous.

Application Note

Functional Studies (Order Ab without Azide);Flow Cytometry (1-2ug/million cells); Immunofluorescence (1-2ug/ml);

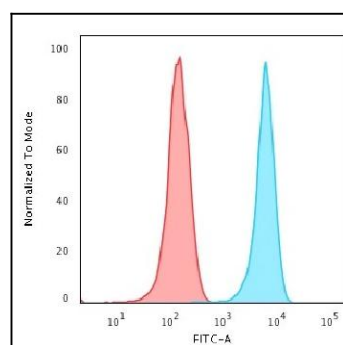


Fig. 1: Flow Cytometric Analysis of Jurkat cells using CD3e Mouse Monoclonal Antibody (RIV9) followed by Goat anti-Mouse IgG-CF488 (Blue); Isotype Control (Red).

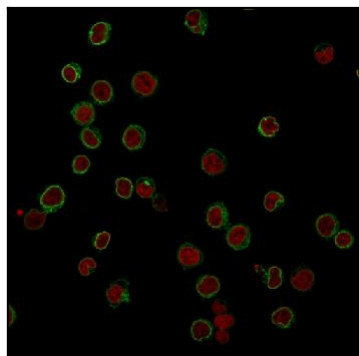


Fig. 2: Immunofluorescence Analysis of Jurkat cells labeling CD3e with CD3e Mouse Monoclonal Antibody (RIV9) followed by Goat anti-Mouse IgG-CF488 (Green). The nuclear counterstain is Reddot (Red).

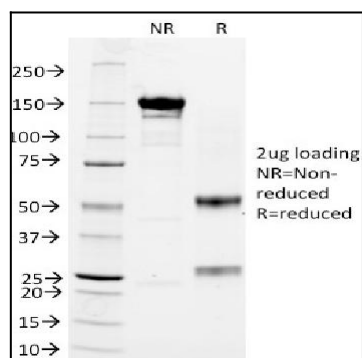


Fig. 3: SDS-PAGE Analysis CD3e Mouse Monoclonal Antibody (RIV9). Confirmation of Integrity and Purity of Antibody.