

## 36-3503: Anti-CD6 (Negative Marker of T-regulatory Cells) Monoclonal Antibody(Clone: SPV-L14)

<b>Clonality :</b>	Monoclonal
<b>Clone Name :</b>	SPV-L14
<b>Application :</b>	FACS,IF
<b>Reactivity :</b>	Human, Mouse
<b>Gene :</b>	CD6
<b>Gene ID :</b>	923
<b>Uniprot ID :</b>	P30203
<b>Alternative Name :</b>	T12; TP120
<b>Isotype :</b>	Mouse IgG1, kappa
<b>Immunogen Information :</b>	CD8+ cytotoxic T-cell clone

### Description

CD6 is a type I transmembrane glycoprotein that contains a 24-amino acid signal sequence, three extracellular scavenger receptor cysteine-rich (SRCR) domains, a membrane-spanning domain and a 44-amino acid cytoplasmic domain. The CD6 glycoprotein is tyrosine phosphorylated during TCR-mediated T cell activation. CD6 shows significant homology to CD5. CD6 is present on mature thymocytes, peripheral T cells and a subset of B cells. Antibodies to CD6 are used to deplete T cells from bone marrow transplants to prevent graft versus host disease.

### Product Info

<b>Amount :</b>	20 µg / 100 µg
<b>Content :</b>	200 µg/ml of Ab Purified from Bioreactor Concentrate by Protein A/G. Prepared in 10mM PBS with 0.05% BSA & 0.05% azide. Also available WITHOUT BSA & azide at 1.0mg/ml.
<b>Storage condition :</b>	Antibody with azide - store at 2 to 8°C. Antibody without azide - store at -20 to -80°C. Antibody is stable for 24 months. Non-hazardous.

### Application Note

Flow Cytometry (1-2ug/ml); ,Immunofluorescence (1-2ug/ml); ,

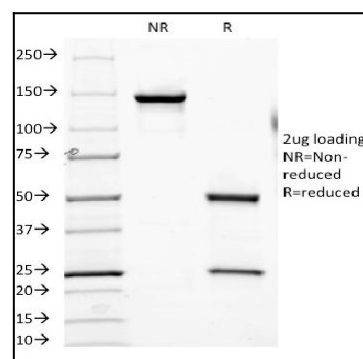


Fig. 1: SDS-PAGE Analysis Purified CD6 Mouse Monoclonal Antibody (SPV-L14).

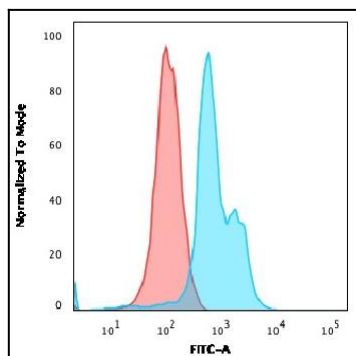


Fig. 2: Flow Cytometric Analysis of MOLT-4 cells. CD6 Mouse Monoclonal Antibody (SPV-L14) followed by Goat anti-Mouse IgG-CF488 (Blue); Isotype control (Red).

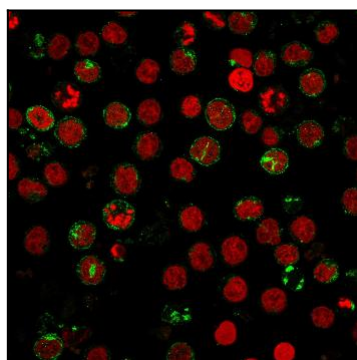


Fig. 3: Immunofluorescence staining of MOLT4 cells using CD6 Mouse Monoclonal Antibody (SPV-L14) followed by goat anti-Mouse IgG conjugated to CF488 (green). Nuclei are stained with Reddot.