

## 36-3504: Anti-CD6 (Negative Marker of T-regulatory Cells) Monoclonal Antibody(Clone: C6/2884R)

<b>Clonality :</b>	Monoclonal
<b>Clone Name :</b>	C6/2884R
<b>Application :</b>	FACS,IF,IHC
<b>Reactivity :</b>	Human
<b>Gene :</b>	CD6
<b>Gene ID :</b>	923
<b>Uniprot ID :</b>	P30203
<b>Alternative Name :</b>	T12; TP120
<b>Isotype :</b>	Rabbit IgG
<b>Immunogen Information :</b>	Human recombinant full-length CD6 protein

### Description

CD6 is a type I transmembrane glycoprotein that contains a 24-amino acid signal sequence, three extracellular scavenger receptor cysteine-rich (SRCR) domains, a membrane-spanning domain and a 44-amino acid cytoplasmic domain. The CD6 glycoprotein is tyrosine phosphorylated during TCR-mediated T cell activation. CD6 is present on mature thymocytes, peripheral T cells and a subset of B cells. Antibodies to CD6 are used to deplete T cells from bone marrow transplants to prevent graft versus host disease.

### Product Info

<b>Amount :</b>	20 µg / 100 µg
<b>Content :</b>	200 µg/ml of Ab Purified from Bioreactor Concentrate by Protein A/G. Prepared in 10mM PBS with 0.05% BSA & 0.05% azide. Also available WITHOUT BSA & azide at 1.0mg/ml.
<b>Storage condition :</b>	Antibody with azide - store at 2 to 8°C. Antibody without azide - store at -20 to -80°C. Antibody is stable for 24 months. Non-hazardous.

### Application Note

Flow Cytometry (1-2ug/ml); Immunofluorescence (1-2ug/ml); Immunohistochemistry (Formalin-fixed) (1-2ug/ml for 30 minutes at RT),(Staining of formalin-fixed tissues requires heating tissue sections in 10mM Tris with 1mM EDTA, pH 9.0, for 45 min at 95&degC followed by cooling at RT for 20 minutes);

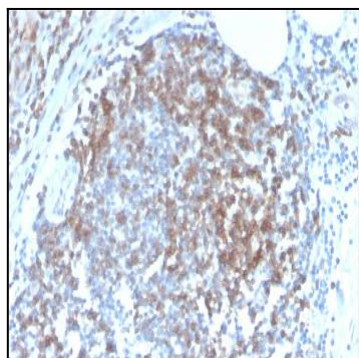


Fig. 1: Formalin-fixed, paraffin-embedded human Tonsil stained with CD6 Rabbit Recombinant Monoclonal Antibody (C6/2884R).

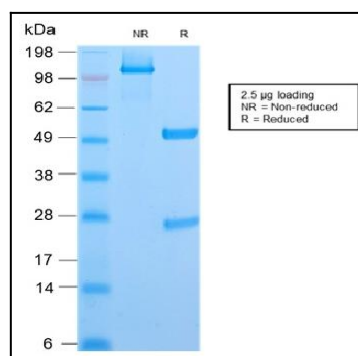


Fig. 2: SDS-PAGE Analysis Purified CD6 Rabbit Recombinant Monoclonal Antibody (C6/2884R). Confirmation of Purity and Integrity of Antibody.

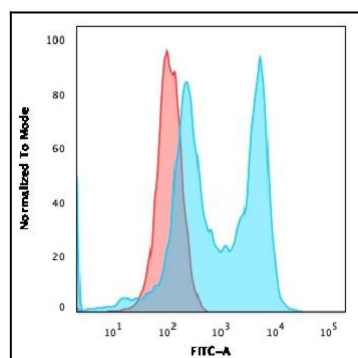


Fig. 3: Flow Cytometric Analysis of MOLT-4 cells. CD6 Rabbit Recombinant Monoclonal Antibody (C6/2884R) followed by goat anti-rabbit IgG-CF488 (Blue); Isotype control (Red).

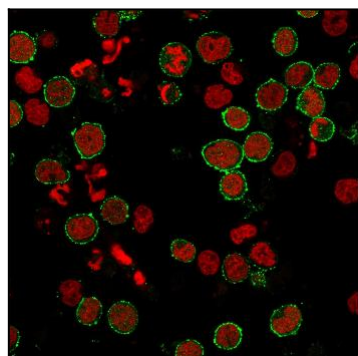


Fig. 4: Immunofluorescence staining of MOLT-4 cells using CD6 Rabbit Recombinant Monoclonal Antibody (C6/2884R) followed by goat anti-rabbit IgG conjugated to CF488 (green). Nuclei are stained with Reddot.